



Facing every
Indication
with a **Smile**



CAD/CAM
Solutions
from **GC**

GC

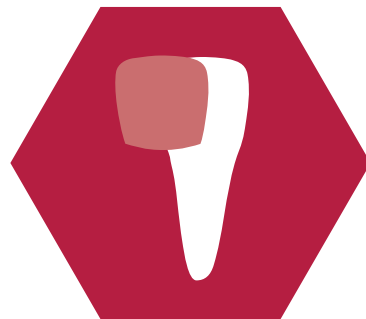
How to choose the optimal CAD/CAM solution for your treatment?

A successful treatment plan is one where the means perfectly match the goals.



The flexible solution for wear

Materials that are too hard can cause damage to the antagonists or can be too brittle and might crack. Instead, the **hybrid ceramic CERASMART™270** is **strong yet flexible**, and ideal to treat such cases.



The aesthetic solution for veneers

A **feldspathic ceramic** material like **Initial™ LRF** is the right choice for the **aesthetic** improvement of anterior teeth or to restore small surfaces. It has the same **vibrant light dynamics** as **natural** teeth and thus provides stunning results in an easy way.



The universal and fast solution

A strong, reliable and aesthetic material that can be used for single-visit dentistry: **Initial™ LiSi Block** is a fully crystallized **lithium disilicate** block, offering a myriad of options. For maximal versatility.



The solution for large treatment

Sometimes, multiple units need to be restored 'en bloc'. No other ceramic material can offer the same strength as **zirconia**. **Initial™ Zirconia Disk** is a durable, metal-free alternative for large constructions and more resistant to fractures than glass ceramics.

Discover our CAD/CAM options!

A philosophy to optimize aesthetics, physical properties and speed

As an innovating company driven by solution seeking, GC embraced the digital age right from the start. Our aim is to provide materials that can be milled **fast and have smooth margins** so that you **win time**. We also want to offer you the **choice** to **polish or paint** and that you have everything from start to finish as a **system** in which you can **trust**.

The **right choice** for each indication!



	CERASMART270	Initial LRF	Initial LiSi Block	Initial Zirconia Disk
Veneers	+	+++	++	+
Anterior Crown	+	+++	+++	++
Crown on Premolars	+++	++	+++	+++
Crowns on Molars	++	+	+++	+++
Inlay/Onlay	+++	+	+++	+
Overlay	+++	+	+++	-
Hyperfunction & Bruxism	+++	-	++	-
Palatal Veneer	+++	+	++	+
General Tooth Wear	+++	+	++	+
Implant Supported Restoration	+++	-	+	+++

Support for every step

GC's complete portfolio enables you to be successful at every step of the process with guaranteed compatibility. From finishing, characterisation and cementation to repair: there is always a tailor-made solution for you.





Your
best choice,
for a brighter
smile

GC's Milling Materials

- CERASMART270
- Initial LRF
- Initial LiSi Block
- Initial Zirconia Disk



CERASMART™270

Force absorbing hybrid ceramic
The flexible solution for wear



Available sizes:

- 12, 14, 14L

Shade Range:

- HT: A1, A2, A3, A3.5, B1
- LT: A1, A2, A3, A3.5, B1
- BL

Natural fit and flexibility

CERASMART270 is a very strong hybrid ceramic CAD/CAM block that combines flexibility and precision to provide a long lasting aesthetic restoration with a natural fit.

Key advantages

- High breaking energy to **buffer masticatory pressure**
- Extremely suitable for patients with generalized wear or hyperfunctions because of its **impressive wear resistance**
- Immaculate **blending ability** for effortless aesthetic results
- Easy polishing for a **very high gloss that lasts** over time

Clinical applications:

- Inlays/onlays
- Palatal and occlusal veneers (restoration of worn surfaces)
- Implant-supported crowns

„CERASMART270 can be milled in a very thin thickness without any margin chipping. It is easy & fast to polish or paint with OPTIGLAZE color. Its resilience is especially interesting for occlusal rehabilitations or when the antagonist is an implant supported restoration.“

Dr. C. Moussally,
France



Increase of the vertical dimension, courtesy of Dr. C. Moussally, France



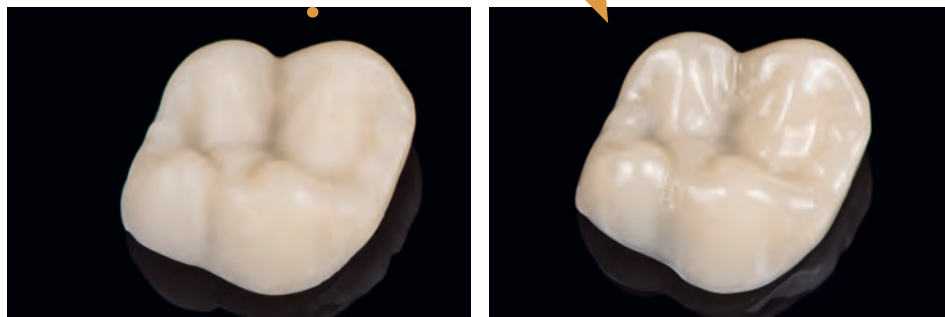
Multiple restorations in one appointment, courtesy of Dr. P. Dimitrov, Bulgaria

CERASMART™ 270

Polish or paint? The choice is yours!

Manual polishing

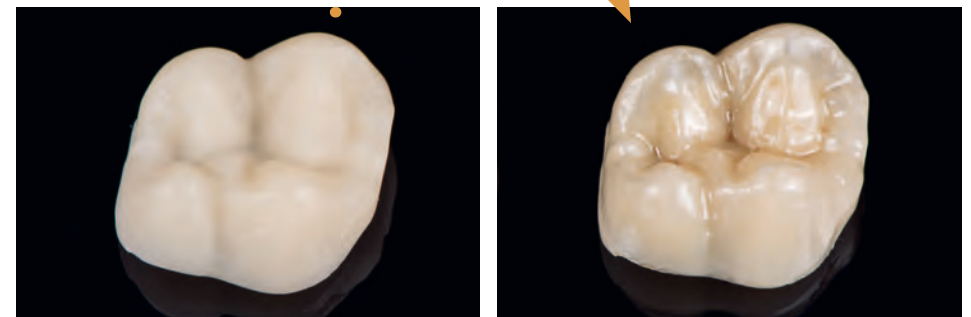
Polishing can be done with your standard polishing wheels and tips. An **impressive gloss level** can be obtained in just a few simple polishing steps. Thanks to the very small particles and our FSC silanisation technology, the gloss will last for a long time.



Characterisation with OPTIGLAZE color

Add character to your restoration with the stroke of a brush using OPTIGLAZE color, a ready-to-use and wear-resistant glossy coating.

You can choose from a wide variety of colours or use the 'Clear' glaze to add gloss only.





Initial™ LRF

Leucite reinforced feldspathic ceramic
The aesthetic solution for veneer



Available sizes:

- 12, 14, 14L

Shade Range:

- HT: A1, A2, A3, A3.5, B1
- LT: A1, A2, A3, A3.5, B1
- BL

Beauty and Strength in the blink of an eye

Initial LRF is a leucite-reinforced feldspar CAD/CAM block for full-contour, all-ceramic restorations with a perfect balance of translucency, fluorescence and opalescence

Key advantages

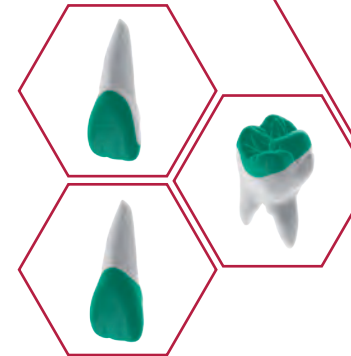
- **Beautiful aesthetics** even by simple polishing due to the natural opalescence and light reflection
- **Simple and fast processing**, with no firing required
- Smooth margins, even at very thin preparations to ensure a **perfect fit**

Clinical applications:

- Veneers
- Inlays/onlays
- Anterior crowns up to the second premolar

„I use GC Initial LRF because it is a highly aesthetic ceramic that gives me the opportunity to achieve beautiful results chairside.“

Dr. D. Di Rocco, Switzerland



Anterior veneer, courtesy of Dr. S. Bechiri, Algeria



Anterior veneers in one appointment, courtesy of Dr. D. Di Rocco, Switzerland

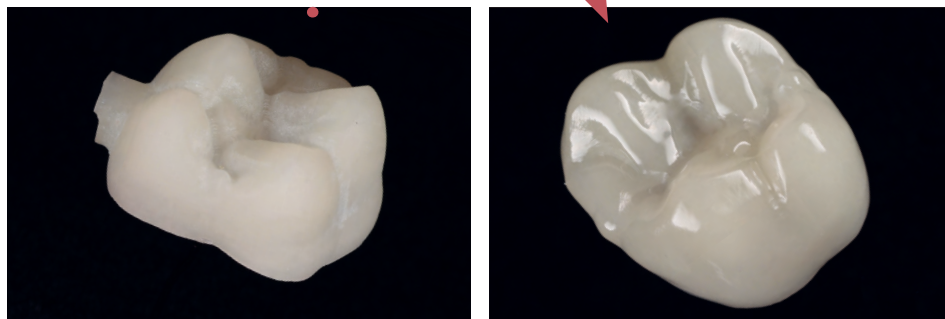
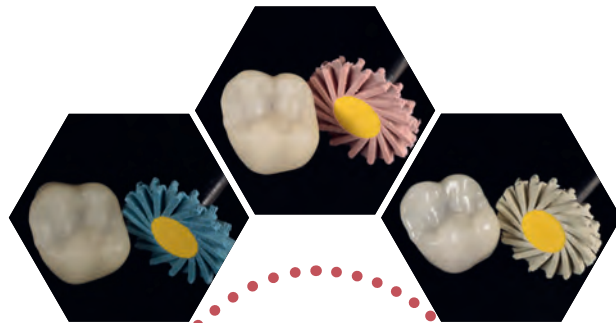


Initial™ LRF

Polish or paint? The choice is yours!

Manual polishing

Initial LRF has a very smooth microstructure, contributing to its aesthetic appearance. With the correct polishing process, a **high gloss** comparable to the gloss obtained with glazing and firing, can be achieved. Glazing and firing takes more time, but offers more characterisation possibilities.



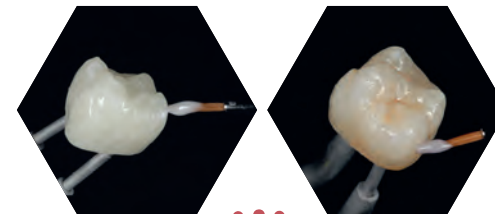
Characterisation with Initial LRF Glaze Paste



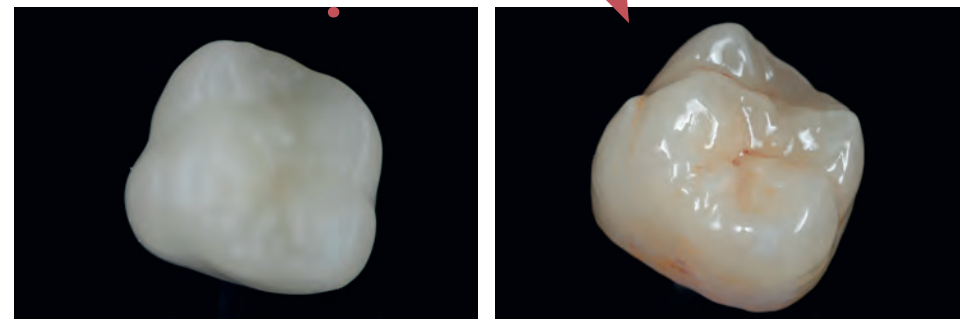
Initial LRF Glaze Paste (GC) has been especially developed to perfectly match Initial LRF and the compatibility between both products is tested and guaranteed. Other glazes and stains might have other properties and damage of the restoration may occur upon their use.

Initial Spectrum Stains (GC) can be added & mixed directly with the Initial LRF Glaze Paste. With this combination, **superb aesthetics** can be achieved in an easy way.

Application of Initial LRF Glaze Paste



Application of Initial LRF Glaze Paste mixed with Initial Spectrum Stains





Initial™ LiSi Block

Lithium disilicate

The universal and fast solution



Available sizes:

- 14

Shade Range:

- HT: A1, A2, A3, A3.5, B1
- LT: A1, A2, A3, A3.5, B1
- Bleach

Natural Beauty Restored in one appointment.

Initial LiSi Block is a fully crystallized lithium disilicate block that delivers optimal physical properties without firing.

Key advantages

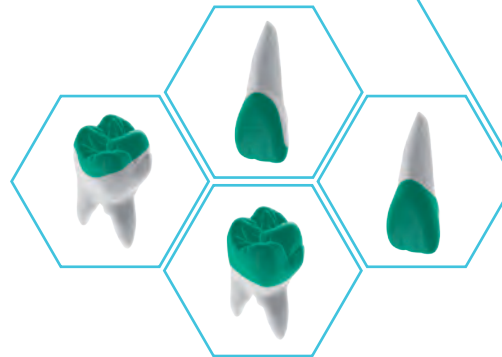
- **Fully crystallized lithium disilicate**, which saves time, as no firing is required.
- Durable aesthetics & accurate margins for a **seamless fit**
- **Natural opalescence** for genuine beauty
- Provides **long-lasting restorations** in the posterior area thanks to high physical properties & HDM technology
- Possibility **to paint and micro-layer** with Initial IQ ONE SQIN

Clinical applications:

- Inlays/onlays
- Posterior crowns
- Anterior crowns/Veneers
- Implant-supported crowns

„From our studies and experiences Initial LiSi Block is the best CAD/CAM lithium disilicate material for margin quality. The working procedure is also very fast – due to full crystallization – which makes this material ideal for a chairside CAD/CAM workflow.“

Dr. A. Kurbad, Germany



Simply polished chairside veneers, courtesy of Dr J. Tapia, Spain



Posterior crown in one appointment, courtesy of Dr. A. Kurbad, Germany



Initial™ LiSi Block

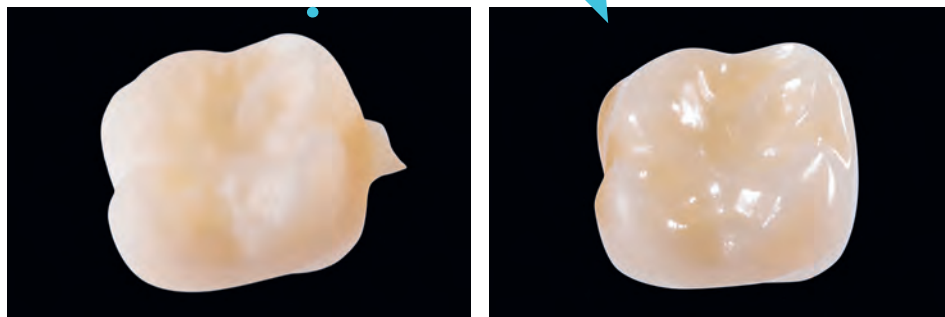
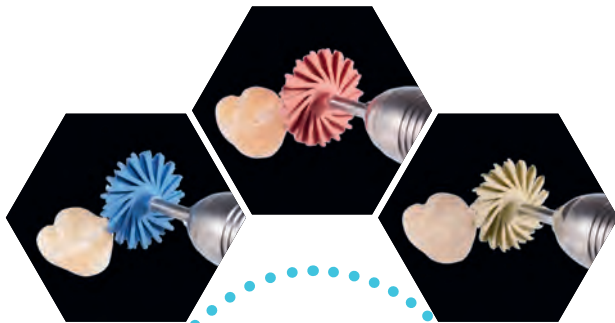
Polish or paint? The choice is yours!

Manual polishing

Mill, Polish, Place

The restoration can be easily polished right after milling with standard silicone wheels.

In less than 10 minutes, a superior gloss is achieved.



Characterisation with Initial IQ ONE SQIN



Mill, Paint, Place.

With GC Initial IQ ONE SQIN - the paintable colour-and-form ceramic system - you can quickly and easily achieve highly aesthetic results, comparable to conventionally layered restorations but with a significant time gain. **How does it work? You choose ...**

Painting technique:

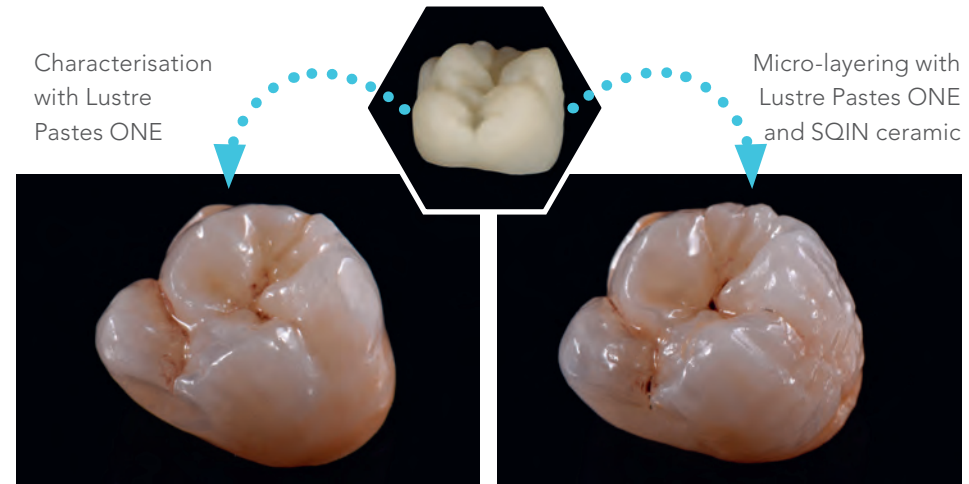
For all your monolithic posterior work, **Initial Lustre Pastes ONE**, the unique **3D paintable ceramics** from GC, bring fluorescence, unsurpassed vitality and a natural glaze... just by painting.

Micro-layering technique:

For sophisticated aesthetic cases in the anterior region, the **Lustre Pastes ONE** and the **SQIN ceramics** are combined, offering unique application and modelling properties that will facilitate **surface texturing** with self-glazing properties after ceramic firing.

Characterisation with Lustre Pastes ONE

Micro-layering with Lustre Pastes ONE and SQIN ceramic





Initial™ Zirconia Disk

CAD/CAM Zirconia Disk

The solution for large treatments



Available Translucencies:

- ST: standard translucency
- HT: high translucency
- UHT: ultra-high translucency

Strong solutions for beautiful teeth

Initial Zirconia Disk provides the perfect framework for your most demanding work and perfectly fits the Initial ceramics line

Key advantages

- High strength
- Translucency comparable to lithium disilicate
- Optimal **edge stability** and easy to mill
- Complete **system solutions** with GC Initial Zr-FS for full contour veneering or IQ ONE SQIN concept for painting & microlayering
- **Dedicated Zr Light Reflective Liners** are ready-to-use liners designed for reliable shade masking

Clinical applications:

- Implant-supported crowns
- Multi-unit bridges
- Posterior crowns



„The combination of the GC Initial Zirconia Disk and Initial Zr-FS veneering ceramic, offers me the best condition for a functional, aesthetic and long-term stable restoration with a high degree of naturalness and a lively interplay of colours.“

MDT. R. Dahl, Germany



Anterior crown, courtesy of MDT. R. Dahl, Germany

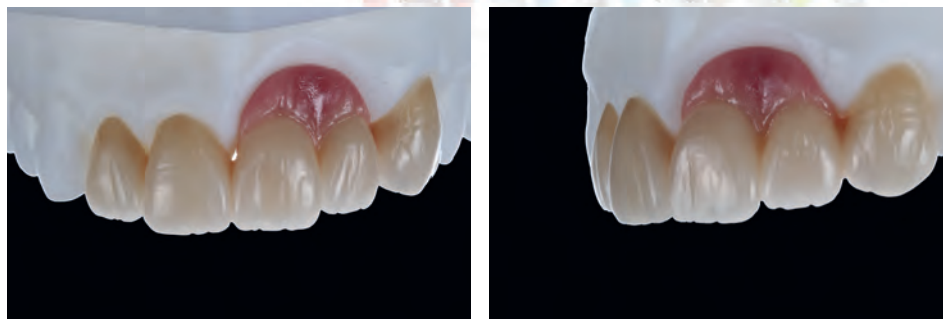
Initial™ Zirconia Disk

Layer or micro-layer? The choice is yours!

Release the full aesthetic potential with GC Initial Zr-FS

Initial Zr-FS is a **refined feldspar-based veneering ceramic** to use with high strength zirconia frameworks.

The **unequaled natural optical effects** and increased stability after multiple firings, make it ideal for the fabrication of highly **demanding aesthetical** crowns, complex and delicate substructures such as bridges on teeth or implants.



Courtesy of MDT. P. Freudenthal, Sweden

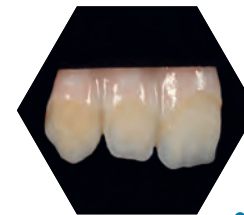
Painting with Lustre Pastes ONE / Micro-layering with Initial IQ SQIN



GC Initial IQ Lustre Pastes ONE are used as a colour and individualization layer assuring a perfect **connection firing** before application of the SQIN powders. In the micro-layering technique, SQIN is easily applied in a layer thickness of **0.1 – 0.6 mm** over the painted and fired Lustre Pastes ONE surface.

Thanks to **the refined mixture of feldspar-based glasses**, a lifelike 3D-effect is created, resulting in colour deepness and lifelike translucency. Mixed with the Form and Texture liquid, the SQIN powders become a highly **compact and dense ceramic** slurry. Their unique application and modelling properties will facilitate **individual surface texturing** with self-glazing properties after ceramic firing.

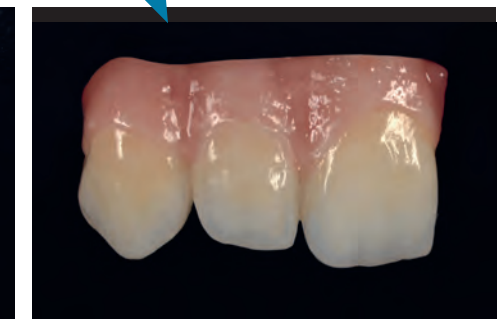
Step 1: colour & effects with Lustre Pastes ONE



Step 2: form & texture with SQIN



Initial zirconia framework



Ready! Autoglace effect

Multifaceted possibilities



Hybrid ceramic



Glass ceramic



Lithium disilicate



Zirconia

Category	Materials	CERASMART270	Initial LRF	Initial LiSi Block	Initial Zirconia Disk
Physical properties	Biaxial Flexural Strength (MPa)	270	210-250	408	600-1200
	Elasticity/ Buffering masticatory forces	+++	-	-	-
	Preventing antagonist wear	+++	++	+	+
Aesthetics	Aesthetics	++	+++	+++	++
	Anterior indications	+	+++	+++	+
	Characterisation options	OPTIGLAZE color	Glaze + Spectrum Stains	IQ ONE SQIN	Initial Zr-FS / IQ ONE SQIN
Handling	Intra-oral Repair	+++	+	+	+
	Polishability	+++	+++	+++	+
	Fast processing	+++	+++	++	+

Cementing
the **Smiles**
of tomorrow

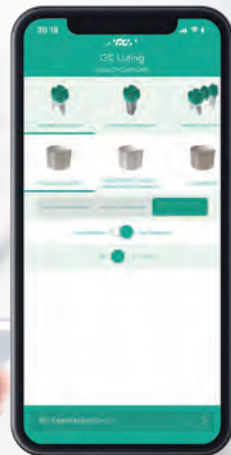
Luting

- G-Multi PRIMER
- G-CEM ONE
- FujiCEM Evolve

Luting Solutions

Select the right material and find back all the luting steps in the GC Luting Guide

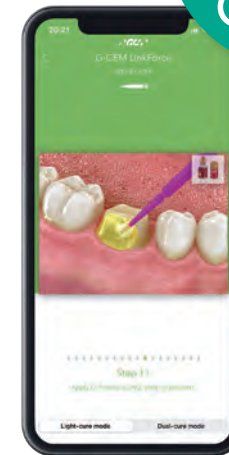
GC
Discover the
GC Luting
Guide!



Information on the clinical situation



Material selection



Individualised step by step



GC Luting Guide

Download in your App-Store:



GC Luting Guide



GC Luting Guide



GET IT ON
Google Play

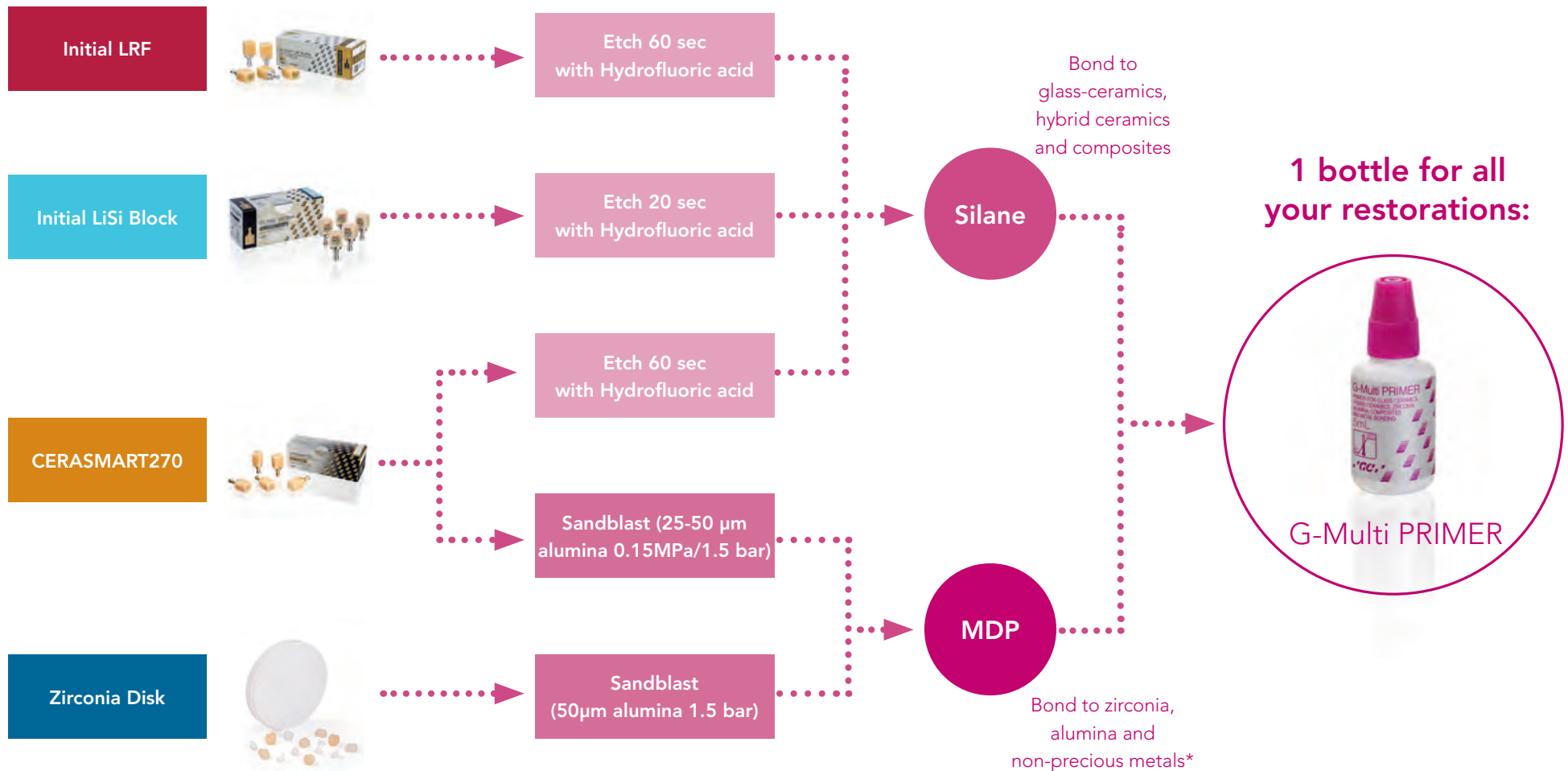


Download on the
App Store



Pre-treatment

Pre-treatment success lies on choosing the right preparation method (mechanical retention) and the adequate primer. From ceramics to zirconia; G-Multi PRIMER, the universal priming agent from GC, can be used in any situation to simplify your luting protocols.



* In case of adhesive cementation, either an MDP- based primer or an MDP containing cement is needed. Not needed when using a RMGIC



G-CEM ONE™
Self-adhesive resin cement
The universal luting solution

The ONE that simplifies!

Choose G-CEM ONE, a dual cure self-adhesive resin cement with high adhesive bond strength for daily procedures, that can also be used in challenging and non-retentive situations when applying the optional tooth primer.



Shade Range:

- A2, Translucent, AO3, White Opaque

Key advantages

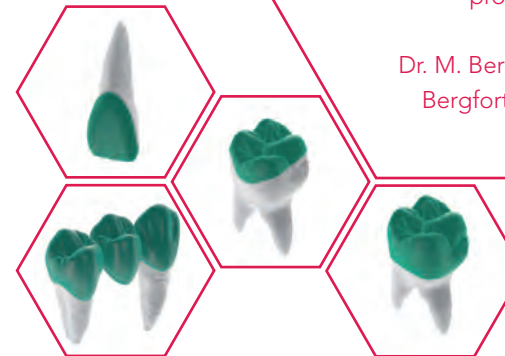
- **Universal:** reliable performance for any type of restoration, including non-retentive ones (when using the Adhesive Enhancing Primer)
- **Reliable:** efficient chemical polymerization even under opaque or thick restorations
- **Flexible:** increased tooth adhesion thanks to the Touch Cure technology of the Adhesive Enhancing Primer (AEP)
- **Aesthetic:** excellent wear resistance for long lasting invisible margins
- **Technique insensitive:** moisture tolerance, ideal viscosity, easy excess removal

Clinical applications:

- Inlays / onlays
- Crowns / bridges
- Veneers
- Posts

“Excesses of G-CEM ONE are super easy to remove and the system is easy to use. We also like the flexibility to decide whether you need the primer or not and the assurance that everything sets well even in the self-cure mode. It's a great product!”

Dr. M. Bergfort & Dr. D. Bergfort, Germany



Flexible: optional use of the tooth primer provides optimal bond strength in retentive & non-retentive indications



Easy excess removal with optional tack curing, courtesy of Dr. K. Otani, Japan



FujiCEM Evolve

Resin-Modified Glass Ionomer cement

The zirconia solution

Always one step ahead!

The resin-modified glass ionomer cement in paste-paste delivery form. This easy-to-use and versatile luting cement is your perfect partner for most of your routine cementation.

Key advantages

- Chemical adhesion to tooth structure, ensuring an **excellent marginal seal**
- **Moisture-tolerant:** a "must-have" when moisture control cannot be guaranteed
- **Quick and easy:** no need for etching and bonding of the tooth
- Rubbery consistency for **easy removal of excess**, with tack-cure option for FujiCEM Evolve
- **Strong bonding** to restorative, **especially for Zirconia**

"FujiCEM Evolve is a very user-friendly luting agent, combining ease of use, moisture tolerance and versatility. It is ideal to cement both zirconia and metal-ceramic restorations, particularly in the presence of juxta- and sub-gingival margins. Cement excess removal is extremely easy and safe. A smart material to make cementation procedures easier and quicker."

Prof. R. Sorrentino, Italy



Shade Range:

- Universal

Clinical applications:

- Inlays / onlays
- Crowns / bridges
- Posts



Handmix



Automix



Easy dispensing & easy excess removal, courtesy of Dr. J. Tapia, Spain

Summary of protocols



Hybrid ceramic



Glass ceramic



Lithium disilicate



Zirconia

Protocols		CERASMART270	Initial LRF	Initial LiSi Block	Initial Zirconia Disk
Finishing Options	Manual Polishing	+	+	+	-
	Characterisation with OPTIGLAZE color	+	-	-	-
	Characterisation with Initial LRF Glaze Paste	-	+	-	-
	Characterisation with Spectrum Stains	-	+	+	+
	Characterisation with Initial Lustre Pastes ONE	-	-	+	+
	Characterisation with Initial IQ SQIN	-	-	+	+
	Characterisation with Initial Zr-FS	-	-	-	+
Pre-treatment	Sandblasting	+	-	-	+
	Hydrofluoric acid etching	60 sec / 5%	60 sec / 5%	20 sec / 5%	-
	Priming with G-Multi PRIMER	+	+	+	+/-*
Luting	Luting with a self-adhesive like G-CEM ONE with or without AEP	+	+	+	+
	Luting with an RMGIC like FujiCEM Evolve	-	-	-	+

*only needed in case of adhesive cementation

Light Curing and Firing Instructions



LIGHT CURING INSTRUCTIONS for OPTIGLAZE color Wavelength range: 390 – 430 nm	
GC CERASMART270	
Light device	Light curing time
GC D-Light Pro	40 sec
GC LABOLIGHT DUO	90 sec
LED Light	40 sec
Halogen light	40 sec
Plasma Arc	8 sec

	FIRING INSTRUCTIONS for Initial LRF Glaze Paste		FIRING INSTRUCTIONS for Lustre Pastes ONE		FIRING INSTRUCTIONS for IQ SQIN	
	GC Initial LRF Block	Initial LiSi Block	Initial Zirconia Disk (sintered elements)	Initial LiSi Block	Initial Zirconia Disk	
Preheating Temperature	450°C	450°C	450°C	400°C	400°C	
Drying Time	4 min	2 min	3 min	4 min	4 min	
Closing Time	4 min	2 min	3 min	4 min	4 min	
Raise of Temperature	45°C/min	45°C/min	45°C/min	40°C/min	40°C/min	
Vacuum	YES	YES	YES	YES	YES	
Final Temperature	840 - 860°C	730 - 750°C	850°C	750 - 760°C	750 - 800°C	
Holding Time	1 min	1 min	1 min	1 min	1 min	

Order information

CERASMART270, 5 blocks

CEREC						
Ref.	Size	Ref.	Size	Ref.	Size	Shade
10001391	12	10001413	14	10001435	14L	A1 HT
10001392	12	10001414	14	10001436	14L	A2 HT
10001393	12	10001415	14	10001437	14L	A3 HT
10001394	12	10001416	14	10001438	14L	A3.5 HT
10001395	12	10001417	14	10001439	14L	B1 HT
10001396	12	10001418	14	10001440	14L	A1 LT
10001397	12	10001419	14	10001441	14L	A2 LT
10001398	12	10001420	14	10001442	14L	A3 LT
10001399	12	10001421	14	10001443	14L	A3.5 LT
10001400	12	10001422	14	10001444	14L	B1 LT
10001401	12	10001423	14	10001445	14L	BL

Universal

Ref.	Size	Ref.	Size	Ref.	Size	Shade
10001402	12	10001424	14	10001446	14L	A1 HT
10001403	12	10001425	14	10001447	14L	A2 HT
10001404	12	10001426	14	10001448	14L	A3 HT
10001405	12	10001427	14	10001449	14L	A3.5 HT
10001406	12	10001428	14	10001450	14L	B1 HT
10001407	12	10001429	14	10001451	14L	A1 LT
10001408	12	10001430	14	10001452	14L	A2 LT
10001409	12	10001431	14	10001453	14L	A3 LT
10001410	12	10001432	14	10001454	14L	A3.5 LT
10001411	12	10001433	14	10001455	14L	B1 LT
10001412	12	10001434	14	10001456	14L	BL

GC OPTIGLAZE color

Ref.	Description	Ref.	Description
10000434	Optiglaze 15ml	10001159	red brown, 2.6ml
10001150	OPTIGLAZE color full set	10001160	olive, 2.6ml
10001151	A plus, 2.6ml	10001161	grey, 2.6ml
10001152	B plus, 2.6ml	10001162	blue, 2.6ml
10001153	C plus, 2.6ml	10001163	lavender, 2.6ml
10001154	white, 2.6ml	10001164	pink, 2.6ml
10001155	ivory white, 2.6ml	10001165	red, 2.6ml
10001156	yellow, 2.6ml	10001166	clear, 5ml
10001157	orange, 2.6ml	10001167	clear HV, 5ml
10001158	pink orange, 2.6ml		

Initial LRF, 5 blocks

CEREC						
Ref.	Size	Ref.	Size	Ref.	Size	Shade
10003044	12	10003045	14	10003046	14L	A1 HT
10003050	12	10003051	14	10003052	14L	A2 HT
10003056	12	10003057	14	10003058	14L	A3 HT
10003062	12	10003063	14	10003064	14L	A3.5 HT
10003068	12	10003069	14	10003070	14L	B1 HT
10003047	12	10003048	14	10003049	14L	A1 LT
10003053	12	10003054	14	10003055	14L	A2 LT
10003059	12	10003060	14	10003061	14L	A3 LT
10003065	12	10003066	14	10003067	14L	A3.5 LT
10003071	12	10003072	14	10003073	14L	B1 LT
10003074	12	10003075	14	10003076	14L	BL

Universal

Ref.	Size	Ref.	Size	Ref.	Size	Shade
10003077	12	10003078	14	10003079	14L	A1 HT
10003083	12	10003084	14	10003085	14L	A2 HT
10003089	12	10003090	14	10003091	14L	A3 HT
10003095	12	10003096	14	10003097	14L	A3.5 HT
10003101	12	10003102	14	10003103	14L	B1 HT
10003080	12	10003081	14	10003082	14L	A1 LT
10003086	12	10003087	14	10003088	14L	A2 LT
10003092	12	10003093	14	10003094	14L	A3 LT
10003098	12	10003099	14	10003100	14L	A3.5 LT
10003104	12	10003105	14	10003106	14L	B1 LT
10003107	12	10003108	14	10003109	14L	BL

Ref.	Initial LRF
10003110	GC Initial LRF Glaze Paste & Liquid

GC Initial LiSi Block, 5 blocks

CEREC		
Ref.	Size	Shade
10004844	14	A1 HT
10004886	14	A2 HT
10004887	14	A3 HT
10004888	14	B1 HT
10037273	14	A3.5 HT
10004889	14	A1 LT
10004956	14	A2 LT
10004957	14	A3 LT
10037274	14	A3.5 LT
10004958	14	B1 LT
10037275	14	Bleach

Ref. Description

10007249	GC Initial LiSi Block MPP Kit
10007322	GC Initial LiSi Block Aesthetic Kit

GC Initial Zirconia Disk

Ref.	Size	Shade
10006716	98.5 x12 mm	UHT
10006717	98.5 x14 mm	
10006718	98.5 x18 mm	
10006719	98.5 x25 mm	
10006712	98.5 x12 mm	HT
10006713	98.5 x14 mm	
10006714	98.5 x18 mm	
10006715	98.5 x25 mm	
10006708	98.5 x12 mm	ST
10006709	98.5 x14 mm	
10006710	98.5 x18 mm	
10006711	98.5 x25 mm	

GC Initial IQ Lustre Pastes ONE	
Ref.	Description
10007017	LP ONE V-Shades Set, 88g
10006997	LP ONE Lustre Body Shade A L-A, 4g
10006998	LP ONE Lustre Body Shade B L-B, 4g
10006999	LP ONE Lustre Body Shade C L-C, 4g
10007000	LP ONE Lustre Body Shade D L-D, 4g
10007001	LP ONE Lustre Paste Neutral L-N, 4g
10007002	LP ONE Enamel Effect Shade 1 L-1, 4g
10007003	LP ONE Enamel Effect Shade 2 L-2, 4g
10007004	LP ONE Enamel Effect Shade 3 L-3, 4g
10007005	LP ONE Enamel Effect Shade 4 L-4, 4g
10007006	LP ONE Enamel Effect Shade 5 L-5, 4g
10007007	LP ONE Enamel Effect Shade 6 L-6, 4g
10007008	LP ONE Enamel Effect Shade 7 L-7, 4g
10007009	LP ONE Enamel Effect Shade 8 L-8, 4g
10007010	LP ONE Enamel Effect Shade 9 L-9, 4g
10007011	LP ONE Enamel Effect Shade 10 L-10, 4g
10007012	LP ONE Enamel Effect Shade V L-V, 4g
10007013	LP ONE Enamel Effect Shade OP L-OP, 4g
10007014	LP ONE Lustre Paste Neutral Fluo L-NFL, 4g
10007015	LP ONE/NF Diluting Liquid, 8ml
10007016	LP ONE/NF Refresh Liquid 8ml
10007018	LP ONE Lustre Paste Neutral L-N, 12g
10007019	LP ONE Lustre Paste Neutral Fluo L-NFL, 12g

GC Initial Spectrum Stains			
Ref.	Description	Ref.	Description
10003190	GC Initial Spectrum Stain Set	10003005	SPS-11 Coral, 3g
10003012	Glaze Powder GL, 10g	10003006	SPS-12 Denim Blue, 3g
10006996	Glaze Powder GL-FLUO,10g	10003007	SPS-13 Denim Blue, 3g
10002995	SPS-1 Ivory White, 3g	10003008	SPS-14 Deep Orange, 3g
10002996	SPS-2 Mellon Yellow, 3g	10003009	SPS-15 Sunset, 3g
10002997	SPS-3 Signal Yellow, 3g	10003010	SPS-16 Midnight, 3g
10002998	SPS-4 Light Terracotta, 3g	10006992	SPS-17, Dark Brown, 3g
10002999	SPS-5 Savannah Gold, 3g	10006993	SPS-18, Illusion 1, 3g
10003000	SPS-6 Caramel, 3g	10006994	SPS-19, Illusion 2, 3g
10003001	SPS-7 Camel, 3g	10006995	SPS-20, Illusion 3, 3g
10003002	SPS-8 Olive, 3g	10003011	Glaze Liquid, 25ml
10003003	SPS-9 Brown, 3g	10003013	Glaze Paste Liquid, 8ml
10003004	SPS-10 Dark Walnut, 3g		

GC Initial IQ SQIN	
Ref.	Description
10006991	ONE SQIN SYSTEM SET, 228g
10006975	SQIN Powder, Dentin, Body-A, 10g
10006976	SQIN Powder, Dentin, Body-B, 10g
10006977	SQIN Powder, Dentin, Body-C, 10g
10006978	SQIN Powder, Dentin, Body-D, 10g
10006979	SQIN Powder, Dentin, BL-D, 10g
10006980	SQIN Powder, Dentin, E-57, 10g
10006981	SQIN Powder, Dentin, E-58, 10g
10006982	SQIN Powder, Dentin, E-59, 10g
10006983	SQIN Powder, Dentin, E-60, 10g
10006984	SQIN Powder, Dentin, BL-E, 10g
10006985	SQIN Powder, Dentin, TO-Booster, 10g
10006986	SQIN Powder, Dentin, GUM, light, 10g
10006987	SQIN Powder, Dentin, GUM, dark, 10g
10006989	SQIN Form & Texture Liquid, 50ml
10006990	SQIN SHADES SET, 140g

G-CEM ONE	
Ref.	Description
10006918	Starter Kit A2: 1x syringe (4.6 g), 1x AEP(2 mL), accessories
10006919	Starter Kit Translucent: 1x syringe (4.6 g), 1x AEP(2 mL), accessories
10006920	System Kit: 1x syringe A2 (4.6 g / 2.7 mL), 1x syringe A3 (4.6 g / 2.7 mL) 1x AEP (4 mL), 1x G-Multi PRIMER (5 mL), accessories
10007240	System Kit + AEI BUNDLE
10006921	Twin Refill A2: 2x syringes (4.6 g / 2.7 mL)
10006922	Twin Refill Translucent: 2x syringes (4.6 g / 2.7 mL)
10006923	Single Refill AO3: 1x syringe (4.6 g / 2.7 mL)
10006924	Single Refill White Opaque: 1x syringe (4.6 g / 2.7 mL)
10006925	Value Refill A2, 8x syringe (4.6 g / 2.7 mL)
10006926	Value Refill Translucent, 8x syringe (4.6 g / 2.7 mL)
10006833	Adhesive Enhancing Primer (AEP), 4 mL

GC FujiCEM Evolve	
Ref.	Description
10004926	Single Pack: 1x syringe (9.2 g / 5.0 mL), 15x GC Push and Click Tip Regular
10004916	Triple Pack Handmix: 3x syringe (9.2 g / 5.0 mL), 1x Mixing Pad #22
10004928	Triple Pack Automix: 3x syringe (9.2 g / 5.0 mL), 45x GC Push and Click Tip Regular
10006621	Clinic Pack
10004917	GC Push and Click Tip Regular x 15
10004929	GC Push and Click Tip Endo x15
10007241	Push and click mixing tips 105 pcs

G-Multi PRIMER	
Ref.	Description
10001350	G-Multi PRIMER, 5 ml



Initial LiSi Block



G-CEM ONE



Trainings

GC EUROPE N.V.

Head Office Researchpark
Haasrode-Leuven 1240
Interleuvenlaan 33
3001 Leuven, Belgium
Tel. +32 (0)16 74 10 00
Fax. +32 (0)16 40 02 14
info.gce@gc.dental
<https://europe.gc.dental>

GC UNITED KINGDOM Ltd.

Coopers Court Newport Pagnell
Buckinghamshire MK16 8JS
United Kingdom
Tel. +44.1908.218.999
Fax. +44.1908.218.900
info.uk@gc.dental
<https://europe.gc.dental/en-GB>



Since 1921
100 years of Quality in Dental