

G-Premio BOND



A premium
bonding
experience

GC

The most clinically successful adhesive¹ is now even better with G-Premio BOND.

G-BOND has proven to be the most clinically successful adhesive with an annual failure rate of just 1.3 restorations per 100 restorations placed.¹

This clinical success clearly endorses G-BOND's formulation – designed for **durability through chemical bonding,¹** using a more hydrophobic, **non-HEMA containing** self-adhesive resin.

G-Premio BOND is a no compromise, one-component, light-cured universal adhesive that delivers a bonding experience like no other. It offers outstanding performance in all etching modes and all clinical situations.

TOP 10 BONDING AGENTS

	Adhesive (manufacturer)	Annual Failure Rate	Number of clinical trials
1	G-BOND (GC)	1.3	7
2	Adper Scotchbond 1 XT (3M ESPE) [#]	1.4	5
3	Optibond FL (Kerr) [#]	1.8	6
4	Clearfil SE Bond (Kuraray Noritake) [#]	2.2	12
5	Clearfil Liner Bond (Kuraray Noritake) [#]	2.2	3
6	Adper Prompt L-Pop (3M ESPE) [#]	2.3	7
7	Clearfil S3 Bond (Kuraray Noritake) [#]	2.6	7
8	Adper Easy Bond (3M ESPE) [#]	3.2	3
9	XPBond (Dentsply DeTrey) [#]	3.5	5
10	Adhese (Ivoclar Vivadent) [#]	3.6	3

Ranking is based on average annual failure rate (AFR) reported from a minimum of 3 independent clinical trials for adhesive performance in non carious cervical lesions (NCCL).¹

[#] Not trademarks of GC Corporation



Enjoy a premium bonding experience like no other!

Universal etching modes

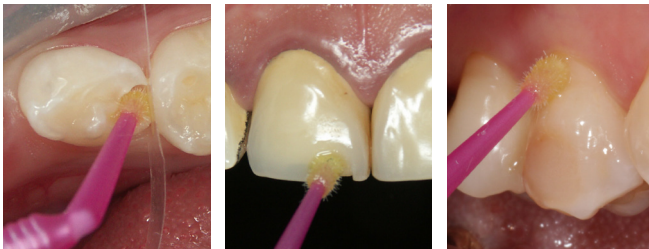


Self-etch

Selective-etch

Total-etch

Universal indications



Direct bonding.

Image courtesy of
Dr S. Koide, Japan.

Repair cases.

Image courtesy of
Dr S. Koide, Japan.

Hypersensitivity
treatment.

Image courtesy of
Dr E. Sauji, Japan.

Universal advantages

- Fast and simple, no rubbing or complex application procedures.
- Chemically bonds within the first few seconds of application.
- Visible during application, invisible after light-curing.
- Wets the tooth just like water.
- Perfect margins.
- No patient discomfort.
- **With an award winning bottle design**
The new bottle for G-Premio BOND is the Worldstar Winner 2019 of the WorldStar Packaging Awards in the Medical and Pharmaceutical category.[†]



[†] www.worldstar.org/winners/2019/medical-pharmaceutical

Premium bonding with G-Premio BOND

Premium performance in any clinical setting

- An easy and forgiving application procedure with **minimal opportunity for handling errors**.
- **Immediate chemical bonding**, so even a shortened application time will deliver high bond strengths **without needing to rub** the surface.
- The drying step is **highly reproducible**: 5 seconds, MAXIMUM air pressure.
- A higher content of photo-initiator gives **more efficient light-curing**.
- The fast, 25 sec self-etch application and chemical adhesion is **perfect for paediatric bonding or clinical cases where moisture control is challenging**.
- Its yellow colour prior to light-curing gives **visual control of application**.
- **Stable formulation** with a 2-year shelf life and **no refrigeration required**.



Yellow on application



Invisible after light-curing

Images courtesy of Dr. S. Köken, Turkey

Premium adhesive bond strengths²

- **Exceptional bond strengths** to enamel and dentine, regardless of the etching mode.³
- **4-MET, MDP and MDTP** universalise its bonding capabilities, providing strong adhesion to: GIC, metals (including precious), composites, zirconia and alumina.
- Combines with G-Multi Primer for **optimum adhesion** to glass ceramics.



Premium comfort for your patients

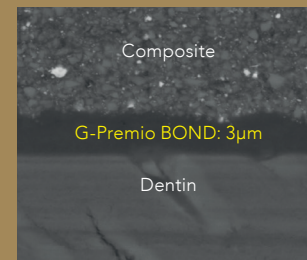
- Applies like no other bond, with **exceptional wetting characteristics**.
- Has an **innate ability to penetrate** and form an immediate chemical bond.
- **Eliminates patient discomfort.**²
- Treatment option for **cervical hypersensitivity**.



Source: GCC R&D, Japan (2024).
Data on file (test condition: in-house test)
available from: info.australasia@gc.dental

Premium margin aesthetics

- Forms an ultra-thin, **hydrophobic bond layer** to deliver invisible margins.
- All water is removed from the bond layer during air drying, to ensure bond durability, and a **very low 3µm film thickness**.
- Smart filler technology produces a **high filler density** in a fluid consistency bond.
- Enhanced photo-initiators ensure a **stronger bond layer** after light-curing.
- **HEMA-free**.



Source: GCC R&D, Japan (2015).
Data on file (test condition: in-house test)
available from: info.australasia@gc.dental

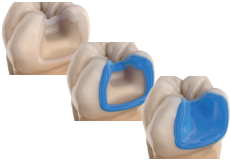
Premium value

- Unique silicon bottle gives **total control** over dispensing.
- A thin nozzle design minimises material wastage and guarantees **up to 300 applications per 5ml bottle**.



G-Premio BOND direct bonding technique

A simple application technique with immediate adhesion and high bond strengths provides an ideal platform for clinical success in direct bonding procedures.



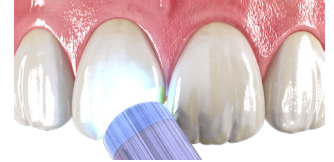
1. Select preferred Universal etching mode.



2. Apply **G-Premio BOND** and wait for 10sec.



3. Dry for 5sec at **MAX** air pressure.



4. Light-cure for 10sec.

G-Premio BOND repair application technique

G-Premio BOND enables excellent adhesion to all substrates after thermocycling,⁴ recognising that the use of a separate primer (G-Multi Primer) together with G-Premio BOND is essential on glass ceramics to ensure durable adhesion.



1. Roughen the surface; Rinse and dry.



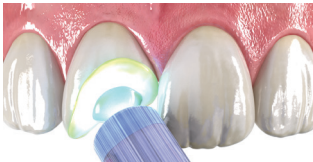
2. If there is a glass ceramic surface, apply **G-Multi Primer** and dry.



3. Apply **G-Premio BOND** to all surfaces to be repaired and leave for 10sec.



4. Dry for 5sec at **MAX** air pressure.



5. Light-cure for 10sec.

G-Multi PRIMER uses 3 different chemical and bonding agents to ensure perfect adhesion to ALL substrates. Formulated for stability and durable adhesion. It has a 2 year shelf life and does not require refrigeration.



Q&A

What is the working time of G-Premio BOND?

The working time of G-Premio BOND is 7 minutes from dispensing time, in the dedicated dispensing dish, or 5 minutes in a flat dish.

Why do we recommend using a separate silane for repair of ceramics?

To bond to ceramics, a silane coupling agent is always needed to achieve a stable bond. In recent times some manufacturers have incorporated silane into universal adhesives but the resulting bond to ceramics has not proven to be durable.⁵ To ensure the most durable adhesion to ceramics, G-Premio BOND does not contain silane and the prior application of a separate silane (eg. G-Multi PRIMER) is required.

How can G-Premio BOND achieve good bond strength values even with a very short application time?

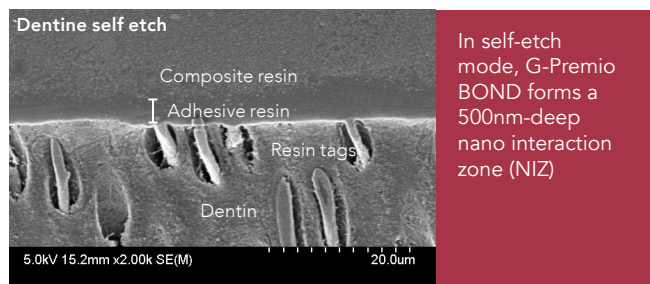
Thanks to a new formulation, G-Premio BOND displays a faster dissolution of the smear layer and improved infiltration. This enables the bonding agent to achieve sufficient bond strength to both enamel and dentin even with a very short application time, regardless of the etching mode.

What is the effect of G-Premio BOND on hypersensitive surfaces?

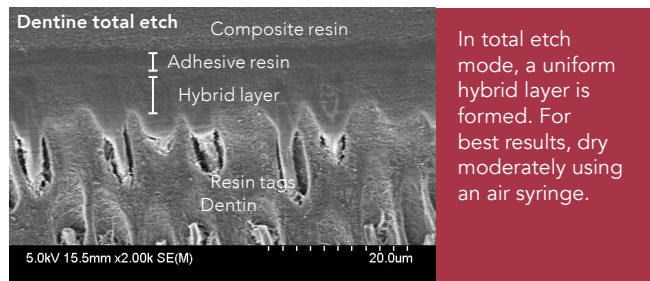
G-Premio BOND fills and covers the dentinal tubules, which prevents dentin hypersensitivity.

Does G-Premio BOND perform well in all etching modes?

Yes, G-Premio BOND presents very good bond strengths to both dentin and enamel in self-etch, selective etch and total-etch modes.⁶ It is fully compatible with all techniques.



Source: GCC R&D, Japan (2016). Data on file (test condition: in-house test) available from info.australasia@gc.dental



Do not over-dry as this could collapse the collagen fibres. Do not use a wet bonding technique. Source: GCC R&D, Japan (2016). Data on file (test condition: in-house test) available from info.australasia@gc.dental

G-Premio BOND Refill

5mL liquid (1)



G-Premio BOND Unit Dose

0.1 mL liquid (50)

disposable applicator, fine (50)



G-Premio BOND 3-bottle Pack

5mL liquid (3)



References:

1. M. Peumans, J. De Munck, A. Mine, B. Van Meerbeek (2014). Clinical effectiveness of contemporary adhesives for the restoration of non-carious cervical lesions. A systematic review. *Dental Materials* 30(10):1089-1103. <https://pubmed.ncbi.nlm.nih.gov/25091726>
2. K. Sai et al. (2016). Influence of degradation conditions on dentin bonding durability of three universal adhesives. *Journal of Dentistry* 54: 56–61. <https://pubmed.ncbi.nlm.nih.gov/27645112>
3. Oz, F.D., Kutuk, Z.B., Ozturk, C. et al. (2019). An 18-month clinical evaluation of three different universal adhesives used with a universal flowable composite resin in the restoration of non-carious cervical lesions. *Clin Oral Invest* 23(3), 1443–1452. <https://pubmed.ncbi.nlm.nih.gov/30109443>
4. GCC R&D, Japan (2024). Data on file (test condition: in-house test partially refer to ISO 29022: 2013) available from: info.australasia@gc.dental
5. Yoshihara K, et al (2016). Effectiveness and stability of silane coupling agent incorporated in 'universal' adhesives. *Dent Mater* 32(10):1218-1225. <https://pubmed.ncbi.nlm.nih.gov/27461880>
6. GCC R&D, Japan (2024). Data on file (test condition: in-house test partially refer to ISO 29022: 2013) available from: info.australasia@gc.dental

PRODUCTS ON THIS PUBLICATION ARE NOT AVAILABLE FOR PURCHASE BY THE GENERAL PUBLIC. ALWAYS READ THE LABEL AND FOLLOW THE DIRECTIONS FOR USE.



Since 1921
Towards Century of Health

GC Australasia Dental Pty Ltd
1753 Botany Road Banksmeadow
NSW 2019 Australia

T: +61 2 9301 8200
E: info.australasia@gc.dental
www.gc.dental/australasia