

Smart Solutions from GC

for all your Clinical Challenges

The Art of Restorative Treatment



How to choose the optimal restorative material?

Today more than ever, many types of restorative materials are available on the market and it becomes more and more challenging to determine which one is the most appropriate to use in each clinical situation.

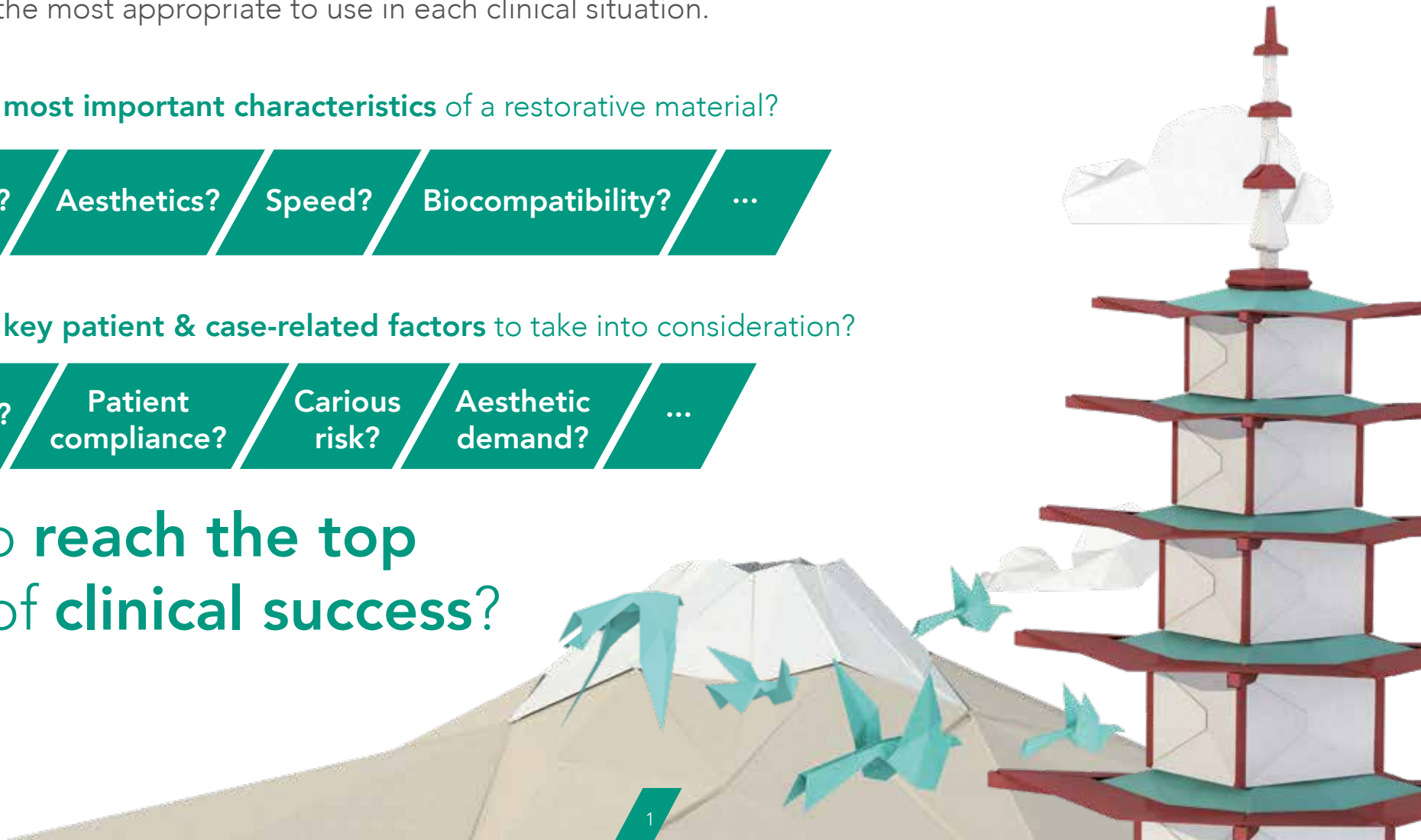
What are the **most important characteristics** of a restorative material?



What are the **key patient & case-related factors** to take into consideration?



How to reach the top of clinical success?



Discover GC's innovative solutions for all your restorative challenges

Since its foundation, GC has always had a strong focus on the development of **innovative restorative materials** to fit each clinical situation.

Almost a hundred years down the line, GC is proud to display a full portfolio of restorative products and to be able to guide you through...

GC Smart Solutions
for all your clinical
challenges.



Which restorative material...

High caries risk?



Less cooperative patients?



Temporisation solution needed?



No perfect isolation possible?



Moderate aesthetic demand or affordable solution needed?



Choose a **Glass Ionomer**

Choose a **Glass**

...for which **clinical situation**?

Long-term solution needed?



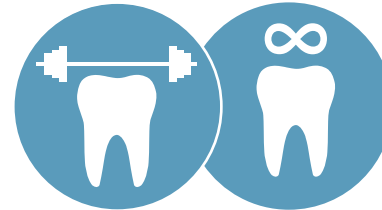
Good isolation possible?



High aesthetic demand?



High strength required?



Hybrid



Choose a **Composite**





Restorations are our **Legacy**

GC's Glass Ionomers

- GC Fuji II LC
- GC Fuji TRIAGE
- GC Fuji IX family
- Conditioners

The unique advantages of glass ionomers



Glass ionomers are moisture-tolerant

The use of a rubber dam is optional when restoring a tooth using a glass ionomer, as these materials **can tolerate moisture**. This is a big advantage for **subgingival cases** or those requiring a **short procedure time**.



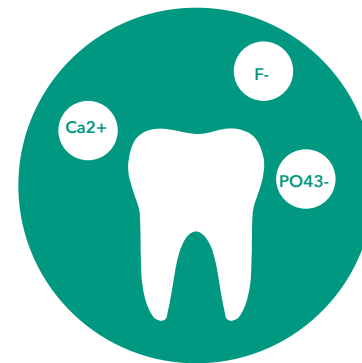
Glass ionomers chemically bond to tooth

Glass ionomers **chemically bond** to natural teeth, without the use of any adhesive or primer. From **young aprismatic enamel** up to **old sclerotic dentin**, a **durable marginal seal** and an **optimal longevity** are ensured.



Glass ionomers are tooth-friendly

Glass ionomers can be used in the **partial caries excavation** technique, helping to create minimally invasive preparations. As no etching is used, there is **no risk of post-operative sensitivity** – which also makes glass ionomers a **safe treatment solution**.



Glass ionomers are natural reservoir for ions

Through ion exchange, ions are being uptake from surroundings (saliva, tooth paste...), and diffuse into e.g. from tooth structure. This gives glass ionomers the ability to **stimulate tooth remineralisation and prevent tooth demineralisation**. Furthermore, this smart material reacts to acid circumstances by an increase ion exchange for extra protection.

GC Fuji II LC

Light-cured resin-modified glass ionomer restorative



Simple technique – Beautiful long-lasting results

Key advantages

- **Controlled setting with the light** for a straightforward & simple procedure
- Excellent **aesthetics & translucency**
- Outstanding **proven clinical performance**
- Ideal for **cervical erosion** / abfractions, **root surface** restorations & **pedodontics**
- Also optimal in the **closed & open sandwich technique**
- High chemical adhesion for a **perfect marginal integrity**
- **Ion exchange:** uptake and diffusion of ions, creating of a **strong and acid-resistant** tooth-material interface

"Fuji II LC is a very good material when isolation of the cavity is challenging, like for pediatric or geriatric cases. Fuji II LC also bonds optimally to dentin – even if sclerotic – making it a good choice for class V restorations, especially those caused by abrasion."

Dr Martin Hoftvedt, Norway

Delivery

- Capsule
- Powder/Liquid

Shade Range

- A1, A2, A3, A3.5, A4, B2, B3, B4, C2, C4, D2



Restoration of cervical erosions using Fuji II LC



Restoration of Class III pedodontic cavities using Fuji II LC



Courtesy of Dr Geoff Knight, Australia

Courtesy of Dr Jamie Lucas, Australia

GC Fuji TRIAGE®

Low-viscosity glass ionomer protection
& temporary restorative



The most polyvalent material for difficult situations Guiding the way to caries stabilisation and surface protection

Key advantages

- Moisture tolerance for **easy placement**, even for **partially erupted molars**
- Low viscosity and excellent flow for **perfect sealing of deep pits & fissures**
- **Bio-availability of ions** needed to prevent tooth demineralisation, assisting the tooth in **resisting to caries**
- **Go-to product for tricky situations:** kids, elderly, high caries risk, teeth with MIH...
- Available in a unique **pink colour** with **accelerated setting** and enabling an **easy monitoring**
- **Easy removal of temporary restorations or endo-access restorations** thanks to the pink colour
- Also optimal for the treatment of **hypersensitivity**

Delivery

- Capsule
- Powder/Liquid

Shade range

- Pink, White

"Being amongst the first users of Fuji TRIAGE in France and after so many years using it, I am still loyal to this glass ionomer. It has no equivalent and is so handy for everyday preventive dentistry."

Dr Michel Blique, France



Protection of a partially erupted molar with Fuji TRIAGE Pink



Root surface protection with Fuji TRIAGE White & a protective coating layer



Courtesy of Dr Michel Blique, France

Courtesy of Dr Graeme Millich, New-Zealand

GC Fuji IX GP, GP FAST & GP EXTRA

High viscosity posterior glass ionomer restoratives



The proven „gold standard“
Hassle-free glass ionomers for posterior cavities

Key advantages

- **Condensable** materials, **easy to apply and to contour**
- Resin-free
- **Bioactive material:** ion uptake helps to **strengthen the restoration** and increase its longevity
- Ideal to use in the **closed sandwich technique** & for **temporary restorations**
- When **selective caries removal** or ART technique is used; caries development can be inhibited through ion exchange
- Fuji IX GP FAST displays a **much shorter procedure** time: only 3 minutes from mixing to finishing
- Fuji IX GP EXTRA offers **higher translucency**

“Fuji IX GP EXTRA is the ultimate all-round glass-ionomer restorative material, featuring a simple procedure, the best chemical coronal seal and a high strength. Fuji IX GP EXTRA is matchless, clinically proven and remains the most versatile glass ionomer system.”

Dr Akit Patel, United Kingdom

Delivery

- Fuji IX GP FAST: Capsule
- Fuji IX GP & GC Fuji IX GP EXTRA: Capsule & Powder/Liquid

Shade Range

- Fuji IX GP: A2, A3, A3.5, B2, B3, C4
- Fuji IX GP FAST: A1, A2, A3, A3.5, B2, B3, C4
- Fuji IX GP EXTRA: A1, A2, A3, A3.5, B1, B2, B3, C4



Failing amalgam restorations



Amalgam removal & preparation



Fillings with Fuji IX GP EXTRA



Final temporary restorations

/// G-COAT PLUS

Nanofilled self-adhesive light-cured protective coating

Key advantages

- Single dispersion nano-filled protective coating for glass ionomer, composite and temporary restorations
- Prevents the initial sensitivity of GICs to water
- Offers immediate surface gloss and smoothness
- Saves polishing time
- Increases strength, toughness and provides wear resistance



Fuji IX GP application

Courtesy of Dr Jamie Lucas, Australia



Application of G-COAT PLUS followed by light-curing

Courtesy of Dr Jamie Lucas, Australia

/// GC Conditioners

Key advantages

- Clean the surface effectively for **improved adhesion**
- Improve **wettability & adaptation** of the restorative material
- Prepare dentin & enamel for chemical adhesion **without opening the dentinal tubules**
- Enhance the **marginal seal**
- Blue tint for a **controlled application**

/// Dentin Conditioner

Polyacrylic acid cavity conditioner




- 10% polyacrylic acid with application time of 20 seconds

/// Cavity Conditioner

Cavity cleaning agent



- 20% polyacrylic acid with application time of 10 seconds
- 3% aluminum chloride hexahydrate to seal the dentin tubules & reduce the risk of post-operative sensitivity

The background is a low-poly 3D illustration of a seascape. On the left, a large, tan-colored mountain with a white, snow-capped peak rises from the water. The water is light blue with white, geometric icebergs scattered throughout. In the foreground, a teal sailboat with a tall, triangular sail is the central focus. To its left, a smaller blue sailboat is visible, and to its right, a yellow sailboat is partially obscured. The sky is a light, pale blue. The overall style is clean and modern, using flat colors and sharp geometric shapes.

The new Generation
of **long-term**
Restoratives

**GC's
Long-Term
Biomimetic
Systems**

- EQUIA
- EQUIA Forte HT

EQUIA®

Bulk-fill long-term restorative system



The proven posterior restorative system Long-term aesthetics simplified

Key advantages

- **Long-term indications** thanks to the combination of a **fast-setting & translucent high-viscosity** material (EQUIA Fil) and a **highly filled resin coating** (EQUIA Coat)
- **Quick** and **technique-tolerant permanent** material
- High **fracture toughness, flexural strength** and **flexural fatigue resistance**
- Increased strength of the material over time due to the **unique maturation effect**, attributed to ion uptake from saliva
- Total procedure time of **only 3'30"**
- The **most aesthetic in its class** thanks to a **high translucency**
- **10 years of clinical proof** showing excellent success rates in posterior restorations

Delivery

- EQUIA Fil: Capsule
- EQUIA Coat: Bottle

Shade range

- A1, A2, A3, A3.5, B1, B2, B3, C4, SW

"The EQUIA restorative system is indicated for temporary and permanent restorations (small occlusal & proximal cavities) and has remarkable properties: chemical adhesion to tooth tissues, marginal seal, improved mechanical properties, technique-tolerance, fast procedure and biocompatibility."

Dr Jean-Pierre Attal, France



Aesthetic amalgam replacements with EQUIA

Courtesy of Dr Magdalena Kukurba-Setkowicz, Poland



Restoration of Class V cavities with EQUIA

Courtesy of Dr Michel Blique, France



The added advantages of glass hybrid technology



Glass Hybrids
take you to the next level

Glass hybrid systems offer the **strength of the latest innovative glasses** combined to the **wear resistance of a filled coating**. The unique synergy between the coating and the restorative material **improves the durability and wear resistance** of the restorations.



Glass Hybrids
are true bulk fill materials

Glass hybrid materials are **chemically cured** in a short time and do not require to be placed in layers. There is **no limit in the depth of cure** and **no shrinkage** linked to the setting of the materials, making them a **very safe, biocompatible solution for bulk application**.



Glass Hybrids
widen your options

Thanks to their resistance, glass hybrids are the only glass-based materials which offer **extended indications**. They are ideal materials for class V and **load bearing class I & II cavities**.*



Glass Hybrids
are long-term restoratives

Clinical study** has shown that glass hybrids are an excellent option for **long-term posterior restorations** and for the **replacement of old amalgams**.

*Please refer to Instructions For Use

**Glass hybrid versus composite for non-carious cervical lesions: Survival, restoration quality and costs in randomized controlled trial after 3 years Schwendicke F, 2021

/// EQUIA Forte™ HT

Bulk-fill glass hybrid restorative system



Cost-effective, long-term restorative alternative

Key advantages

- Excellent balance of **strength and handling** thanks to the intelligent particle distribution of **Glass Hybrid technology**
- **Non-sticky** consistency, perfect to be used in bulk **without any bonding agent**
- **Smart material**, increased ion exchange in acidic circumstances
- Perfect material for **long-term Class I & II restorations**
- Safe Bioactive treatment for **deep cavities with limited post-operative sensitivity**
- Excellent **alternative to amalgam**
- Ideal to **restore teeth affected by MIH** thanks to a great chemical adhesion even to untreated dentin

Delivery

- EQUIA Forte HT Fil: Capsule
- EQUIA Forte Coat: Bottle or Unit Dose

Shade Range

- 8 shades: A1, A2, A3, A3.5, B1, B2, B3, C4

"Aesthetic, biomimetic, strong and practical... With these properties, EQUIA Forte HT provides more effective treatment options for patients with deep carious lesions in my clinical practice - without any sensitivity."

Dr Zeynep Bilge Kütük, Turkey



Initial situation showing interproximal caries



Preparation and placement of sectional matrices























Filling with EQUIA Forte HT Fil and adding the final layer of EQUIA Forte Coat



Post-operative situation after light-curing of the coat

Courtesy of Dr Zeynep Bilge Kütük, Turkey

The best choice for each indication

 Long-term restorative systems  High-viscosity glass ionomer  Low-viscosity glass ionomer  Resin-modified glass ionomer  Light-cured material			POSTERIOR							ANTERIOR		OTHER INDICATIONS				
			Class I		Class II			Class V	Base (sandwich technique)	Class III	Class V	Core build-up	Primary teeth	Fissure protection	Root surface protection	Temporary restorations
			Small, non-load bearing	Big, load bearing	Small, non-load bearing	Small, load bearing	Big, load bearing*									
EQUIA Forte HT (Glass Hybrid)			+++	+++	+++	+++	+++	+		++	+++	++		+	+	
EQUIA			+++	+++	+++	+++		++	+		+++	++	++		+	+
GC Fuji II LC	 		+					++	+++	+++	+++	++	+++			
GC Fuji TRIAGE	 **												+++	+++	+++	
GC Fuji IX GP			+		+			+	+++		+	++	+		+	+++
GC Fuji IX GP FAST			+		+			+	+++		+	++	++		+	+++
GC Fuji IX GP EXTRA			+		+			+	+++		+	++	++		++	+++

* The preparation should be 1-1.5mm away from the cusp peaks. Please refer to instructions for use.

** Command set for the Pink shade

EQUIA Forte HT

The ideal long-term posterior solution



- ✓ Class I
- ✓ Class II
- ✓ Posterior Class V
- ✓ Core build-up
- ✓ Gerodontology
- ✓ Restoration of MIH teeth

GC Fuji II LC

The easy light-cured option



- ✓ Pedodontics
- ✓ Sandwich technique
- ✓ Class III
- ✓ Anterior Class V

GC Fuji TRIAGE

The best fluid protection



- ✓ Desensitisation of MIH teeth
- ✓ Deep cavities
- ✓ Fissure sealing
- ✓ Partially erupted teeth
- ✓ Sealing of endo access cavities
- ✓ Root surface protection
- ✓ Temporary restorations

	EQUIA Forte HT	EQUIA	GC Fuji II LC		GC Fuji TRIAGE		GC Fuji IX GP		GC Fuji IX GP FAST	GC Fuji IX GP EXTRA	
Working time (mn) at 23°C	1'30	1'15	3'15	3'45	1'40		2'00		1'15	1'15	2'00
Net setting time (mn) at 37°C	2'30	2'00	Light-cured		2'30		2'20		2'00	2'00	2'20
Finishing time from start of mixing (mn) at 37°C	2'30	2'30			6'00*		6'00		3'00	2'30	6'00
Shelf-life (years)	Caps – 2 Coat – 3	Caps – 2 Coat – 3	2	3	2	3	2	3	2	2	3

* 4'00 for the Pink shade when using Command Set

When **Aesthetics**
meet **Longevity**

GC's Composites

- G-ænial family
- Essentia family
- GRADIA DIRECT family
- GRADIA CORE
- everX Flow & everX Posterior

The unique strengths of composites



Composites are **highly aesthetic**

Composite is the best choice when looking for a **highly aesthetic material** for anterior restorations or demanding patients. Their **translucency** and **light-scattering ability** makes them **blend naturally with the surrounding tooth structure** for a perfect final outcome.



Composites are **very strong**

Modern composites feature **high strength** and are able to **withstand masticatory forces**. They are also developed to **resist wear** and to **keep a smooth surface** over time. Another advantage of composites is that they induce **less wear to the antagonists** than ceramic materials.



Composites are **particularly durable**

Thanks to their excellent physical properties, composite materials are **very durable** and can keep performing well **both functionally & aesthetically** on the **long term**. A **good hygienic compliance** is however needed to avoid the accumulation of plaque which can lead to secondary caries.

G-ænial™ A'CHORD

Light-cured radiopaque universal composite restoratives composite

Simplicity, Performance and Aesthetics in Your Hands. A simplified shade system with harmonious handling for long-lasting performance

Key advantages

- 5 core shades to cover all 16 V-shades, for an easy shade selection and **reduced inventory**.
- **Perfect opacity for natural blending of mono-shade restorations**, even without using opaque or enamel shades
- **Natural fluorescence** under UV and near UV light
- Brushable in anterior, sculptable in posterior, **non-sticky handling** thanks to a unique monomer technology
- Easy & fast polishing to high gloss thanks to the FSC technology
- Combination of 3 proprietary technologies for superior physical properties, including very high wear resistance
- Additional opaque, enamel and cervical shades for an infinite range of aesthetic possibilities
- **High radiopacity of 318%Al**

Shade Range

- Core shades: A1, A2, A3, A3.5, A4
- Opaque shades: AO1, AO2, AO3
- Enamel Shades: JE (Junior Enamel), AE (Adult Enamel)
- Chromatic & cervical shades: A5, A6
- Bleach shades: BW, BOW

"G-ænial A'CHORD has a fine handling and is easy to use. It gives much better aesthetic results in less time and effort".

Dr Helmuth Althoff, Germany



Multi-shade layering with G-ænial A'CHORD

Courtesy of Dr Georg Benjamin, Germany



Mono-shade layering with G-ænial A'CHORD

Courtesy of Dr Radoslav Asparuhov, Bulgaria



/// G-ænial Anterior

/// G-ænial Posterior

Light-cured radiopaque composite restoratives



The art of creating invisible & long-lasting aesthetics
Enjoy great handling & amazing blending

Key advantages

- **Effortless handling** with a smooth & non-sticky viscosity
- High aesthetic level thanks to **optimal light-scattering & blending**
- **Versatile in use:** from single shade simplicity to multi-shade complexity
- Enamel selection **based on the age** of the patient
- Posterior version more packable & radiopaque for **easy placement & follow-up**

Shade Range

G-ænial Anterior:

- Standard shades: XBW (Extra Bleach White), BW (Bleach White), A1, A2, A3, A3.5, A4, B1, B2, B3, C3, CV (Cervical), CVD (Cervical Dark)
- Inside (opaque) shades: AO2, AO3, AO4
- Outside (enamel) shades: JE (Junior), AE (Adult), SE (Senior), TE (Translucent), IE (Incisal), CVE (Cervical)

G-ænial Posterior:

- Standard shades: P-A1, P-A2, P-A3, P-A3.5
- Outside (enamel) shades: P-JE (Posterior Junior), P-IE (Posterior Incisal)

"G-ænial Anterior is a wonderful material, ideally colour-tuned and easy to handle. It enables me to make perfect anterior restorations."
Dr Ulf Krueger-Janson, Germany



Multi-shade layering with G-ænial Anterior



Invisible restoration with G-ænial Posterior



Courtesy of Prof Marleen Peumans, Belgium

Courtesy of Dr Javier Tapia Guadix, Spain

G-ænial Universal Injectable

Universal high-strength restorative composite



Transform the way you work
Start injecting!

Key advantages

- **Indicated for all cavity classes** (without any covering layer) thanks to an exceptional strength & wear resistance
- No slumping: the material **perfectly keeps its shape** thanks to an optimal thixotropy
- **Easy extrusion** from the syringe & **not sticking to the tip** – for maximum comfort
- **Long-lasting aesthetics** thanks to excellent **gloss retention** and color stability
- Bendable dispensing tips for **easy access to any cavity**
- High radiopacity for a **perfect follow-up**

“G-ænial Universal Injectable is the material of choice for all restorative indications. On top of being very easy to control, it has an exceptional strength and a perfect blending with the natural tooth tissues.”

Dr Ahmed Al-Jaff, Iraq

Shade range

16 shades in 3 translucency levels:

- Standard shades: XBW (Extra Bleach White), BW (Bleach White), A1, A2, A3, A3.5, A4, B1, B2, CV (Cervical), CVD (Cervical Dark)
- Inside (opaque) shades: AO1, AO2, AO3
- Outside (enamel) shades: JE (Junior), AE (Adult)



Initial deep Class II cavity



Bendable tips are very useful to reach undercuts



Cavity transformed into a Class I



Final situation after finishing and polishing

Courtesy of Dr Javier Tapia Guadix, Spain

G-ænial Universal Flo

Universal light-cured injectable composite



From the smallest Class V to the most extensive Class II restoration: controlled flow, maximum strength!

Key advantages

- **Full-strength** universal restorative for **all classes of cavities**
- Controlled flow for a **perfect adaptation**
- Optimal thixotropy for **easy build-up of anatomical forms**
- Outstanding **gloss retention** in time
- **Superb aesthetics** with 15 shades featuring **excellent blending**

Shade range

15 shades in 3 translucency levels:

- Standard shades: BW (Bleach White), A1, A2, A3, A3.5, A4, B1, B2, B3, C3, CV (Cervical)
- Inside (opaque) shades: AO2, AO3
- Outside (enamel) shades: JE (Junior), AE (Adult)

"A real flowable material for every indication – very good mechanical properties, easy to use, very nice colour and layering technique."

Dr Zbynek Mach, Czech Republic



Initial Class V cavity



Final result



Initial Class I & II cavities



Final result

Courtesy of Dr Ulf Krueger-Janson, Germany

Courtesy of Prof Joseph Sabbagh, Lebanon

G-ænial Flo X

Light-cured radiopaque flowable composite

From creating perfect linings to restoring narrow tunnel preparations: discover the foundation of perfect aesthetics!

Key advantages

- Optimal viscosity for **lining and small cavities**
- Great flowability for a **perfect adaptation** to cavity walls
- **Easy follow-up** thanks to a high radiopacity even at low thickness
- Opaque shades to **mask cavity bottom discolorations**
- Ergonomic syringe design for a **comfortable and precise application**

Shade range

8 shades in 2 translucency levels:

- Standard shades: A1, A2, A3, A3.5, A4, CV (Cervical)
- Inside (opaque) shades: AO2, AO3

"G-ænial Flo X is optimal to use together with G-ænial Posterior for cases with multiple areas of decay. It is an ideal indication, because the high radiopacity helps to detect quickly the emergence of secondary caries."

Dr Frédéric Raux, France



G-ænial Flo X used for the lining layer

Courtesy of Dr Mark Margolin, Switzerland



G-ænial Flo X used to restore small cavities

Courtesy of Dr Per Nielsen, Switzerland

Essentia® Universal

Essentia U

Universal light-cured composite



Essentia HiFlo

Composite universel photopolymérisable à fluidité élevée



Essentia LoFlo

Composite universel photopolymérisable à fluidité faible



Go one step further with Essentia Universal
1 shade, 3 strong options for all posterior indications

Key advantages

- **One Universal (U) shade** available in **three viscosities** (HiFlo, LoFlo, paste)
- Amazing natural **blending effect**
- All viscosities **recommended from Class I to Class V**, including occlusal cavities
- **Excellent physical properties** for all viscosities, even the most flowable
- Choose your **preferred handling**: HiFlo for a high wettability and flowability, and LoFlo for an excellent thixotropy
- **Low inventory** as one shade can be used for all posterior case

Shade range

- **1 Universal shade (U)**

"Minimally invasive procedures involve the design of very small cavities and in such clinical situations, flowable composites can be very useful. While Essentia HiFlo is able to penetrate the tiniest pits and fissures, Essentia LoFlo is ideal for bigger occlusal restorations thanks to its thixotropic viscosity."

Dr David Gerdolle, Switzerland



Small Class I cavities



Restored with Essentia HiFlo



Non-carious lesions



Restored with Essentia LoFlo

Essentia

Universal light-cured radiopaque composite



Open the door to simplification Discover aesthetic innovation

Key advantages

- **Intuitive shade selection** thanks to a simplified range of 7 shades
- High aesthetic results made simple with a **duo-layering concept** that aims to **mimic the natural ageing of teeth**
- **High gloss retention** thanks to the ultra-fine particles used in the enamel shades
- **Handling of each shade optimised** to its use (softer dentins, packable Universal...)
- Low inventory: **only 7 syringes** for all your cases
- **Characterisation possible** with Essentia Modifiers for high-end aesthetic

Shade Range

- **3 Dentins:** Light (LD), Medium (MD), Dark (DD) for a perfect blending
- **2 Enamels:** Light (LE), Dark (DE) for optimal translucency & opalescence
- **1 Universal** (U) for posterior mono-shade restorations
- **1 Masking Liner** (ML) to conceal discolorations
- **4 Modifiers** (Opalescent OM, Black BM, White WM, Red-Brown RBM) for special effects

“Emulating nature with composite is a difficult challenge, however with Essentia it becomes a simple task: just focus on properly shaping dentin and enamel and the material will do the rest for you. A truly smart system.”

Dr Javier Tapia Guadix, Spain



Initial case



Palatal shell with Light Enamel



Dentin layer with Medium Dentin



Final result

GRADIA® DIRECT Anterior
GRADIA DIRECT Posterior
GRADIA DIRECT X

Light-cured composite restoratives



One shade simplicity and aesthetic invisibility – proven

Key advantages

- **Invisible natural aesthetics** thanks to superb chameleon effect
- **Clinically proven** over more than ten years
- Excellent handling featuring **easy placement & shaping** and a **long working time**
- Optimal for both **single-shade and multi-shade** restorations
- Available in **Anterior and Posterior** versions, as well as **GRADIA DIRECT X** featuring a higher radiopacity

“The predictability, ease of adaptation & sculpting and proven quality of GRADIA DIRECT make it possible to achieve the reliability and aesthetics that my patients expect.”

Dr Michał Szewczyk, Poland

Shade range

GRADIA DIRECT Anterior:

- Standard: XBW (Extra Bleach White), BW (Bleach White), A1, A2, A3, A3.5, A4, B1, B2, B3, C3, CV (Cervical), CVD (Cervical Dark)
- Inside (opaque): AO2, AO3, AO4
- Outside (translucent): DT (Dark), CT (Clear), GT (Gray), NT (Natural), WT (White), CVT (Cervical)

GRADIA DIRECT Posterior:

- Standard: P-A1, P-A2, P-A3, P-A3.5
- Outside (translucent): P-WT (Posterior White), P-NT (Posterior Natural)

GRADIA DIRECT X:

- X-A1, X-A2, X-A3, X-A3.5, X-AO2, X-WT (White Translucent)



Diastema closure with GRADIA DIRECT Anterior

Courtesy of Dr Javier Tapia Guadix, Spain



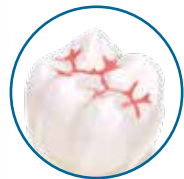
Hypoplastic enamel on central incisors restored with GRADIA DIRECT Anterior at 9 and 12 years recall

Courtesy of Dr Serhat Köken, Turkey



GRADIA DIRECT Flo GRADIA DIRECT LoFlo

Light-cured flowable composites



Aesthetic hybrid microfilled composites for simple restorations

Key advantages

- Two viscosities to cover **many indications**:
 - GRADIA DIRECT Flo (highly flowable) is optimal for **lining, undercuts or enamel imperfections**
 - GRADIA DIRECT LoFlo (high viscosity flowable) is perfect to achieve a **stable placement without slumping**
- Highly filled composites for **superior strength and wear resistance**
- **Clinically proven** over more than ten years
- Combining **ease of use & natural aesthetics**

Shade range

GRADIA DIRECT Flo & GRADIA DIRECT LoFlo: 7 shades in 2 translucency levels

- Standard shades: BW (Bleach White), A1, A2, A3, A3.5, CV (Cervical)
- Inside (opaque) shade: AO3

“Versatile and effective, GRADIA DIRECT Flo displays an excellent wettability and great ability to fill the smallest gaps, without being too flowable. Its application can thus be fully controlled, both at the cavity bottom (avoiding the risk of voids) and when creating splints or sealing fissures.”

Dr Laurent Viard, France



Initial situation



Preparation



After application of GRADIA DIRECT LoFlo



Recall situation

Courtesy of Dr Elias Abou Tayeh, Lebanon

GRADIA CORE

Dual-cure composite for core build-up & post cementation



Complete system for aesthetic core build-up and post luting in only one appointment

Key advantages

- Optimal thixotropy: **flows under pressure** for post luting, **stays in shape** for core build-up without using pre-forms
- **Easy procedure** with limited steps for a one-appointment realisation
- Cutting feeling similar to dentin, for an **easier finishing** and **smooth edges**
- **Strong enough** to resist the occlusal pressure thanks to a 75% filler load
- Modulus of elasticity close to dentin, to **naturally distribute the stress** in the tooth structure
- **Secured adhesion** thanks to a combination of dual-cure and contact-cure

Shade range

- **One universal shade**

“Working with GRADIA CORE is extremely easy as it can be used both to lute posts and to create the core build-up, thereby making the restoration strong & monolithic. It is also time & cost-saving as everything can be done using the same mixing tip! Additionally, the hardness of the set material is very close to that of dentin, therefore it’s easy to prep the stump for indirect restorations without creating grooves at the interface between the tooth structure and the core material.”

Dr Rosen Venelinov, Bulgaria



Canal preparation



Trial fit of the post



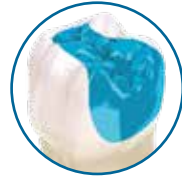
Core build up with Gradia Core



Final restoration

everX Flow™

Short-fibre reinforced flowable composite for dentin replacement



Strong to the core

The toughest composite substructure to reinforce your restorations

Key advantages

- Optimal to **strengthen large restorations** thanks to the **reinforcing effect of fibres**
- **Excellent fracture toughness** reducing the risk of catastrophic failures
- Perfect thixotropy for an **easy placement & adaptation**
- **No slumping** even in upper molars
- **Quick procedure** when using the Bulk shade (with a layer thickness up to 5,5mm)
- **Excellent aesthetic results** with the Dentin shade (in layers of 2mm)
- Indicated both for **dentin replacement** and for **core build-up** preparations

Shade range

- **Dentin** shade
- **Bulk** shade (Translucent)

"Flowable, easy to use and biomimetic, everX Flow is a unique restorative material able to emulate both dentin and dentino-enamel junction (DEJ) by providing the elasticity and toughness of dentin and the unique stress-breaking property of the DEJ."

Dr Mark Frater, Hungary



Cavity preparation



Application of everX Flow (Dentin shade)



Final layer with Essentia (Universal shade)

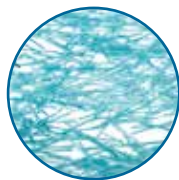


Post-operative situation

Courtesy of Dr Georg Benjamin, Germany

everX Posterior®

Fibre-reinforced composite for dentin replacement



Discover the power of fibres... The strongest composite substructure – extending the limits of direct restorations

Key advantages

- Optimal for **dentin replacement in large cavities** thanks to the **reinforcing effect of fibres**
- **Fracture toughness equivalent to dentin** and almost double that of other composites
- Designed to redirect or arrest crack propagation, thus **reducing the risk of catastrophic failures**
- **Perfect bond** to overlying composite layer (always required) and to the tooth structure
- Compatible **both with layering and bulk application** up to 4mm
- Widens the direct restorative options, offering an **economic alternative to inlays/onlays**

Shade range

- **One universal shade** (Translucent)

“Easy, fast and biomimetic, everX Posterior is the first restorative material able to emulate both dentin and dentino-enamel junction (DEJ) by providing the elasticity and toughness of dentin and the unique stress-breaking property of the DEJ.”

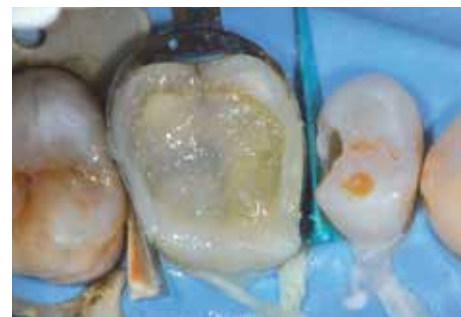
Dr Mark Frater, Hungary



Old failing amalgam restoration



Cavity preparation

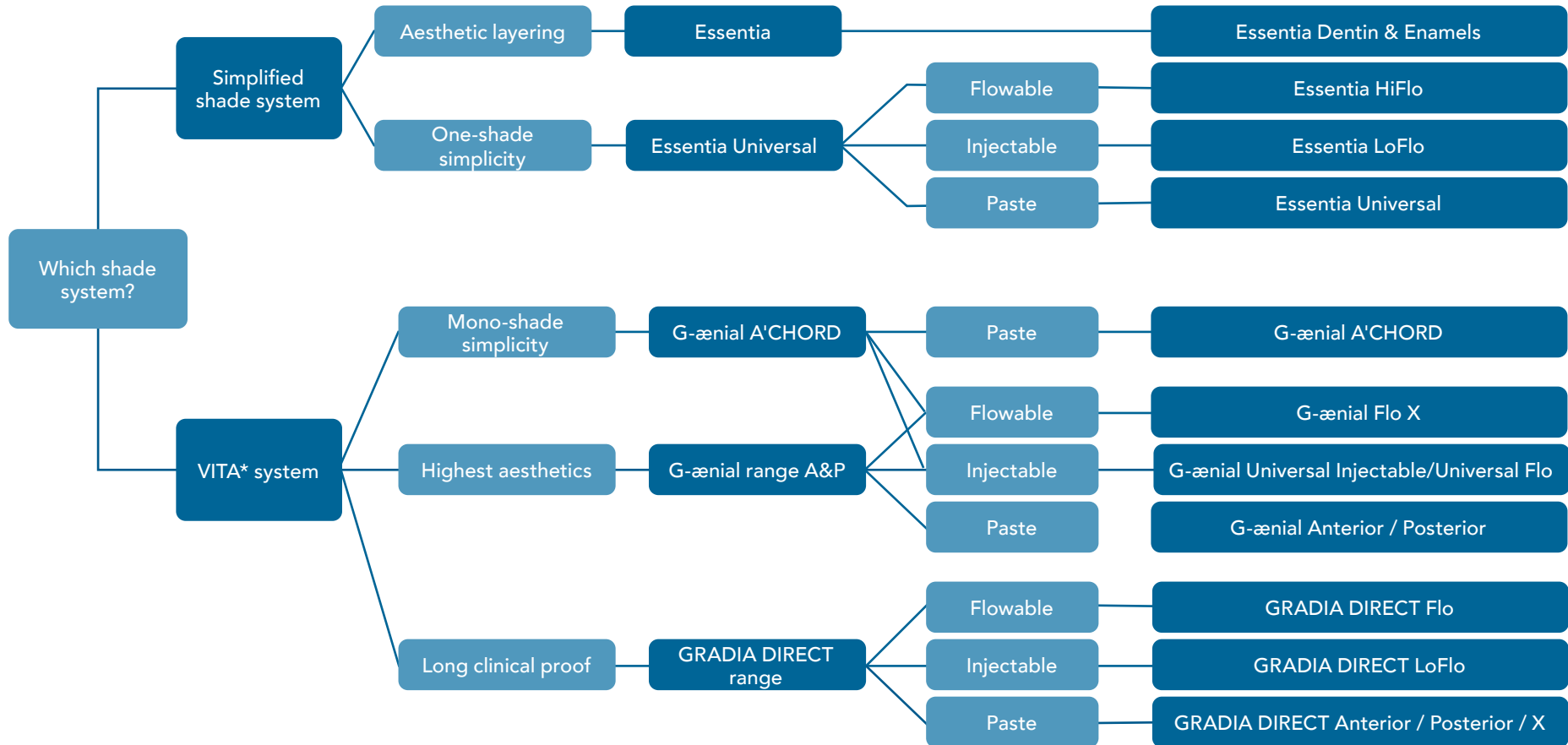


everX Posterior to replace dentin



Enamel layer with a regular composite

The best choice to fit your requirements



*Vita® is a registered trademark of Vita Zahnfabrik, Bad Sackingen, Germany.

		Viscosity	Composition	Main indication	Syringe delivery	Syringe volume	Unitip delivery	Unitip volume	Number of shades	Filler content (%w/w)	Radiopacity	Depth of cure	Working time	Shelf-life
Essentia	Essentia LD, MD, DD	Paste	Micro-HDR hybrid	Universal	✓	2mL	✓	0,16mL	3	76%	142%	1,5-2,0mm	240s	3 years
	Essentia LE, DE, OM	Paste	Ultra-fine hybrid	Universal	✓	2mL	✓	0,16mL	2	81%	291%	2,5mm	220s	3 years
	Essentia U	Paste	Micro-HDR hybrid	Universal	✓	2mL	✓	0,16mL	1	81%	252%	2,5mm	120s	3 years
	Essentia ML	Injectable	Ultra-fine hybrid	Universal	✓	2mL	-	-	1	69%	181%	1mm	70s	3 years
	Essentia LoFlo	Injectable	Ultra-fine hybrid	Universal	✓	2mL	-	-	1	69%	181%	2mm	70s	3 years
	Essentia HiFlo	Flowable	Ultra-fine hybrid	Universal	✓	2mL	-	-	1	69%	303%	2mm	75s	3 years
G-ænial	G-ænial ACHORD	Paste	Ultra-fine hybrid	Universal	✓	2mL	✓	0.16mL	15	82%	318%	2.0-2.5mm	160s	3 years
	G-ænial Anterior	Paste	Micro-HDR hybrid	Anterior	✓	2,7mL	✓	0,16mL	22	76%	142%	1,5-3,5mm	240s	3 years
	G-ænial Posterior	Paste	Micro-HDR hybrid	Posterior	✓	2,7mL	✓	0,16mL	6	81%	252%	2,0-3,0mm	120s	3 years
	G-ænial Universal Injectable	Injectable	Ultra-fine hybrid	Universal	✓	1mL	✓	0,16mL	16	69%	252%	1,5-2,5mm	100s	3 years
	G-ænial Universal Flo	Injectable	Ultra-fine hybrid	Universal	✓	2mL	-	-	15	69%	181%	1,5-2,0mm	70s	3 years
	G-ænial Flo X	Flowable	Ultra-fine hybrid	Universal	✓	2mL	-	-	8	69%	303%	1,5-2,0mm	75s	3 years
GRADIA DIRECT	GRADIA DIRECT Anterior	Paste	Micro-hybrid	Anterior	✓	2,7mL	✓	0,16mL	22	73%	51%	1,5-3,5mm	270s	3 years
	GRADIA DIRECT Posterior	Paste	Micro-hybrid	Posterior	✓	2,7mL	✓	0,16mL	6	77%	131%	2,0-3,0mm	150s	3 years
	GRADIA DIRECT X	Paste	Micro-hybrid	Posterior	✓	2,7mL	✓	0,16mL	6	77%	214%	2,0-3,5mm	150s	3 years
	GRADIA DIRECT LoFlo	Flowable	HDR-hybrid	Universal	✓	0,8mL	-	-	7	63%	130%	1,5-2,0mm	70s	3 years
	GRADIA DIRECT Flo	Flowable	HDR-hybrid	Universal	✓	0,8mL	-	-	7	67%	185%	1,5-2,0mm	70s	3 years
everX	everX Flow	Flowable	Fibre-reinforced	Universal	✓	2mL	✓	0,16mL	2	70%	223%	2,0-5,5mm	90s	3 years
	everX Posterior	Paste	Fibre-reinforced	Posterior	-	-	✓	0,13mL	1	77%	290%	4mm	90s	2 years



There's
so much
more
to discover!

GC's Bonding Agents & Related Products

- G-Premio BOND
- G2-BOND Universal
- G-æniel Bond
- G-BOND
- D-Light Pro
- everStick
- NEW METAL STRIPS
- EPITEX
- DIAPOLISHER PASTE
- GC Modeling Liquid

Which **bonding** for which indication?

Simplicity in bonding with 1 bottle?

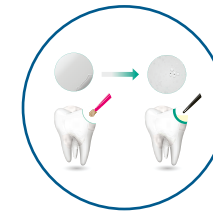
1 bonding for all indications?

Easy dispensing with touch cap bottle?

Separate primer and bonding with hydrophobic properties?

Thick bonding layer for stress absorption in posterior restorations?

Ideal product for the IDS technique?



Choose a **universal single bottle system**



Choose a **universal multi bottle system**

/// G-Premio BOND

One-component light-cured universal adhesive

Discover GC's universal bonding agent: zero compromises on performance – zero compromises on manipulation

Key advantages

- Compatible with **all etching techniques** (self-etch, selective etch or total-etch)
- Indicated for direct bonding, but also for **hypersensitivity treatment & repair cases**
- **Optimal performance on different substrates** thanks to 3 functional monomers (4-MET, MDP & MDTP)
- Extremely thin film thickness (3µm) for very **low chances of discoloration**
- **No post-operative sensitivity** thanks to an excellent penetration into dentinal tubules
- Very **easy procedure** with low technique sensitivity
- **No waste** thanks to a long working time and a thin nozzle delivering up to 300 drops per bottle

Delivery modes

- Bottle
- Unit Dose

"Predictable bonding to dental substrates has long been an onerous and technique-sensitive task. G-Premio BOND has eliminated these issues for all direct and indirect procedures. It truly is a fantastic material."
Dr Serhat Köken, Turkey



Selective etching of enamel



Dispensing of G-Premio BOND



Application of G-Premio BOND



Invisible bonding layer

Courtesy of Dr Serhat Köken, Turkey

G2-BOND Universal
All-round 2-bottle Universal Bonding

Leading the way to a new standard
The new standard of 2-bottle Universal Bonding



Key advantages

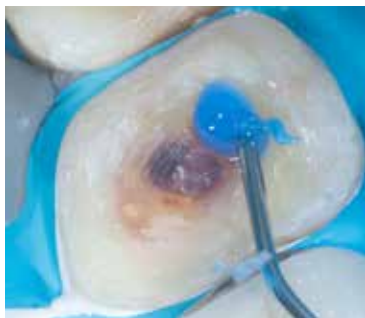
- Your choice of preferred etching mode
- Superior durability and bond strength, thanks to a HEMA free formulation
- Superior resistance to marginal staining
- Optimal film thickness & flexural strength which can provide shock absorbing features
- Easy handling and low technique sensitivity
- Multiple indications from direct restorations to the IDS technique
- Modern, intelligent and ergonomic design

Delivery modes

- 1-PRIMER 5mL Bottle
- 2-BOND 5mL Bottle

"G2-BOND Universal is probably the best option when efficiency is desired without sacrificing bond longevity. it contains all elements that are needed for an optimal adhesive performance."

Dr Dimitrios Spangopoulos, Greece



Total etching of the tooth structure



Application of 1-PRIMER



Application of 2-BOND and light-curing



A flowable composite is applied and the sealed dentin is ready for digital impression.

Courtesy Dr Jean Meyer, France

Immediate Dentin Sealing Technique

/// G-ænial Bond

One-component self-etching light-cured adhesive



Key advantages

- Compatible with both **self-etch** and **selective etch** techniques
- **Long-lasting bond strength** to both **enamel & dentin**
- Excellent **marginal integrity** in time, proven in independent tests
- **No post-operative sensitivity** as dentin is not etched

Delivery

- Bottle



Optional selective enamel etching



Application of G-ænial Bond

Courtesy of Dr Stanisław Lassociński, Poland

/// G-BOND™

One-component self-etching light-cured adhesive



Key advantages

- **True one-bottle system** with a one-step application
- Very **easy & fast procedure** with low technique sensitivity
- Extensive clinical proof showing **superior performance in time**
- Mild etching effect & HEMA-free composition for the **best durability**

Delivery

- Bottle
- Unit Dose



Application in self-etching mode



Final restorations

Courtesy of Dr Javier Tapia Guadix, Spain

D-Light® Pro

Dual wavelength LED curing light



Cure. Protect. Detect...

See the invisible with D-Light Pro's Detection Mode

Key advantages

- Wide emission range to **efficiently polymerise all materials**, regardless of the initiator
- High Power mode to have **the highest curing efficiency** for all routine cases
- Low Power mode optimal to **limit heat generation** when close to the pulp
- Detection mode based on violet light to **visualise active plaque, micro-leakage, old restorations...**
- **Effortless handling & maximum comfort** thanks to a light and thin handpiece
- Autoclavable handpiece & light-guide for **optimal hygiene**

Technical characteristics

Wavelength range

- Peaks at 400-405nm & 460-465nm
- Polymerisation of visible light curing materials curing with a wavelength range of 400 to 480nm

Power output

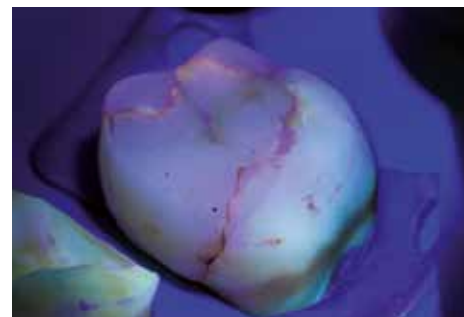
- High Power mode: 1400mW/cm²
- Low Power mode: 700mW/cm²

"The additional visual information you get while using the Detection mode of D-Light Pro during examination, caries excavation, composite removal and even composite reconstruction is a valuable bonus to the curing modes."

Dr Stephane Browet, Belgium



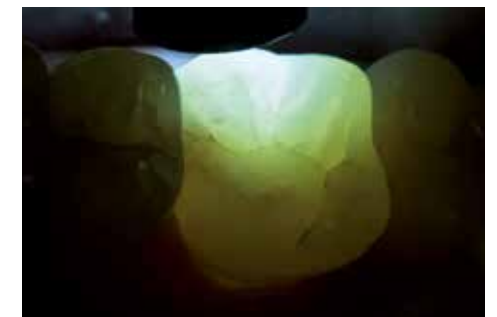
Detection of active plaque



Detection of micro-leakage



Detection of fluorescent restorations



Crack evaluation

Courtesy of Dr Javier Tapia Guadix, Spain

Minimally invasive & patient-friendly fibre reinforcement solutions for daily dentistry

Key advantages

- **Minimally invasive** and **reversible** solutions, leaving **all options open** for future treatments
- **Extensive clinical proof** & in vitro research available
- Superior **mechanical properties**
- **Unique patented bonding** with IPN (Interpenetrating Polymer Network) technology
- **Economical alternative** to indirect treatments

Indications

- Fibre-reinforced composite **bridges**
- Advanced root canal **post & core** structures
- **Splints** of mobile and traumatised teeth
- Orthodontic **retainers**

"I hear dentists say that working with fibres is difficult. They probably never tried everStick... It's instant, easy to handle, extremely durable under load and enables to treat patients in a minimally invasive way. What else can you ask for?"

Dr Rudolf Novotny, Slovakia



Direct fibre-reinforced bridge with everStickC&B

Courtesy of Prof Marleen Peumans, Belgium



Placement of an everStickPERIO fibre splint

Courtesy of Dr Javier Tapia Guadix, Spain



everStickPOST custom-made post

Courtesy of Dr Anja Baraba, Croatia



Trauma splint with everStickNET

Courtesy of Dr Rudolf Novotny, Slovakia

NEW METAL STRIPS

Interproximal finishing strips



Key advantages

- Very **thin, flexible & resistant** material
- **Autoclavable** & easy to clean
- **4 different grits** (Extra Coarse, Coarse, Medium, Fine)

EPITEX

Finishing & polishing strips



Key advantages

- Very **thin, flexible & resistant** material
- **Handy dispensing** system
- **4 different grits** (Coarse, Medium, Fine, Extra Fine) & **matrix strips**



Using EPITEX (Medium Grit) to finish the interproximal areas



DIAPOLISHER PASTE

Diamond polishing paste for composite & porcelain

Key advantages

- Optimal to quickly achieve **final high luster**
- Effective in **avoiding plaque attachment and discolorations**
- **Easy to wash** away with water
- Nice minty flavor for **patient comfort**



GC Modeling Liquid

Liquid to model composite materials for direct restorations

Key advantages

- Simplifies the **application & shaping** of direct composites
- Provides a **smoother aspect to the last layer**
- **Invisible** to achieve the best aesthetic results



Applying Essentia composite using a brush wetted with GC Modeling Liquid



GC Fuji II LC	
10003259	GC Fuji II LC Improved, 3-2 Pack (3 x 15g Powder: A2, A3, B3, 2 x (8g) 6.8ml Liquid)
10000062	GC Fuji II LC Improved, 15g Powder, A1
10000063	GC Fuji II LC Improved, 15g Powder, A2
10000064	GC Fuji II LC Improved, 15g Powder, A3
10000065	GC Fuji II LC Improved, 15g Powder, A3.5
10000066	GC Fuji II LC Improved, 15g Powder, A4
10000067	GC Fuji II LC Improved, 15g Powder, B2
10000068	GC Fuji II LC Improved, 15g Powder, B3
10000069	GC Fuji II LC Improved, 15g Powder, B4
10000070	GC Fuji II LC Improved, 15g Powder, C2
10000071	GC Fuji II LC Improved, 15g Powder, C4
10000072	GC Fuji II LC Improved, 15g Powder, D2
10000073	GC Fuji II LC Improved, 6.8ml (8g) Liquid
10000033	GC Fuji II LC, 50 Capsules, Assortment (10 each of A4, B2, B3, C2, 5 each of B4, D2)
10000034	GC Fuji II LC, 50 Capsules, A1
10000035	GC Fuji II LC, 50 Capsules, A2
10000036	GC Fuji II LC, 50 Capsules, A3
10000037	GC Fuji II LC, 50 Capsules, A3.5
10000038	GC Fuji II LC, 50 Capsules, A4
10000039	GC Fuji II LC, 50 Capsules, B2
10000040	GC Fuji II LC, 50 Capsules, B3
10000041	GC Fuji II LC, 50 Capsules, B4
10000042	GC Fuji II LC, 50 Capsules, C2
10000043	GC Fuji II LC, 50 Capsules, C4
10000044	GC Fuji II LC, 50 Capsules, D2
GC Fuji TRIAGE	
10000387	GC Fuji TRIAGE, P/L Pink (15g Powder, 8ml (10g) Liquid, 5.7ml (6g)) + Dentin Conditioner
10000388	GC Fuji TRIAGE, P/L White (15g Powder, 8ml (10g) Liquid, 5.7ml (6g)) + Dentin Conditioner
10000389	GC Fuji TRIAGE, 50 Capsules, Pink
10000390	GC Fuji TRIAGE, 50 Capsules, White
GC Fuji IX GP	
10000045	GC Fuji IX, GP P/L Intro Package A3, 1-1 Pack (15g Powder, 6.4ml (8g) Liquid)
10001768	GC Fuji IX, GP P/L, 3-2 Pack (3 x 15g Powder: A2, A3, B3, 2 x 6.4ml Liquid)
10000046	GC Fuji IX GP, 15g Powder, A2
10000047	GC Fuji IX GP, 15g Powder, A3
10000048	GC Fuji IX GP, 15g Powder, A3.5
10000049	GC Fuji IX GP, 15g Powder, B2
10000050	GC Fuji IX GP, 15g Powder, B3
10000051	GC Fuji IX GP, 15g Powder, C4
10000052	GC Fuji IX GP, 6.4ml (8g) Liquid
10000053	GC Fuji IX GP, 50 Capsules, A2
10000054	GC Fuji IX GP, 50 Capsules, A3
10000055	GC Fuji IX GP, 50 Capsules, A3.5
10000056	GC Fuji IX GP, 50 Capsules, B2
10000057	GC Fuji IX GP, 50 Capsules, B3
10000058	GC Fuji IX GP, 50 Capsules, C4
GC Fuji IX GP FAST	
10000324	GC Fuji IX GP FAST, 50 Capsules, A1
10000078	GC Fuji IX GP FAST, 50 Capsules, A2
10000079	GC Fuji IX GP FAST, 50 Capsules, A3
10000080	GC Fuji IX GP FAST, 50 Capsules, A3.5
10000081	GC Fuji IX GP FAST, 50 Capsules, B2
10000082	GC Fuji IX GP FAST, 50 Capsules, B3
10000083	GC Fuji IX GP FAST, 50 Capsules, C4

GC Fuji IX GP EXTRA	
10000399	GC Fuji IX GP EXTRA, 50 Capsules, Assorted (10 each of A2, A3, A3.5, B1, B3)
10000400	GC Fuji IX GP EXTRA, 50 Capsules, A1
10000401	GC Fuji IX GP EXTRA, 50 Capsules, A2
10000402	GC Fuji IX GP EXTRA, 50 Capsules, A3
10000403	GC Fuji IX GP EXTRA, 50 Capsules, A3.5
10000404	GC Fuji IX GP EXTRA, 50 Capsules, B1
10000405	GC Fuji IX GP EXTRA, 50 Capsules, B2
10000406	GC Fuji IX GP EXTRA, 50 Capsules, B3
10000407	GC Fuji IX GP EXTRA, 50 Capsules, C4
10001030	GC Fuji IX GP EXTRA, 1-1 Pack, A2 (15g Powder, 6.4ml Liquid)
10001031	GC Fuji IX GP EXTRA, 1-1 Pack, A3 (15g Powder, 6.4ml Liquid)
10001034	GC Fuji IX GP EXTRA, Powder 15g, A1
10001035	GC Fuji IX GP EXTRA, Powder 15g, A2
10001036	GC Fuji IX GP EXTRA, Powder 15g, A3
10001037	GC Fuji IX GP EXTRA, Powder 15g, A3.5
10004948	GC Fuji IX GP EXTRA, Powder 15g, B1
10001038	GC Fuji IX GP EXTRA, Powder 15g, B2
10001039	GC Fuji IX GP EXTRA, Powder 15g, B3
10001040	GC Fuji IX GP EXTRA, Powder 15g, C4
10001028	GC Fuji IX GP EXTRA, Liquid 15g / 6.4ml (8g)
Accessories	
10000019	GC CAVITY CONDITIONER, 6g (5.7ml) Liquid
10000027	GC DENTIN CONDITIONER, 25g (23.8ml) Liquid
10000086	GC FUJI PLUS, 6.5ml (7g) Conditioner
10000415	GC G-COAT PLUS, 4ml, Starter Kit
10000002	GC Fuji VARNISH, 10.4ml (10g) Bottle
10000059	GC Fuji COAT LC, 5.2ml (5g) Liquid
10001806	GC CAPSULE Applier III, (1)
70000004	GC CAPSULE Applier IV, (1)
10000113	GC COCOA BUTTER, Tube of 10g

EQUIA	
10003320	EQUIA, Intro Pack, 50 Capsules, Assorted (10 each of A2, A3, A3.5, B1, B3) + EQUIA Coat 4mL
10003305	EQUIA, Intro Pack, 50 Capsules, A2 + 1 Bottle EQUIA Coat 4mL
10003306	EQUIA, Intro Pack, 50 Capsules, A3 + 1 Bottle EQUIA Coat 4mL
10003307	EQUIA, Intro Pack, 50 Capsules, B2 + 1 Bottle EQUIA Coat 4mL
10003329	EQUIA, Intro Pack, 50 Capsules, SW + 1 Bottle EQUIA Coat 4mL
10003308	EQUIA, Promo Pack, 100 Capsules, A2 + 1 Bottle EQUIA Coat 4mL
10003309	EQUIA, Promo Pack, 2 x 50 Capsules, A2 - A3 + 1 Bottle EQUIA Coat 4mL
10003310	EQUIA, Promo Pack, 100 Capsules, A3 + 1 Bottle EQUIA Coat 4mL
10003311	EQUIA, Promo Pack, 2 x 50 Capsules, B2 - A3 + 1 Bottle EQUIA Coat 4mL
10003330	EQUIA, Promo Pack, SW + 1 Bottle EQUIA Coat 4mL
10003439	EQUIA, Clinic Pack, 250 Capsules, A2 + 1 Bottle EQUIA Coat 6mL
10003440	EQUIA, Clinic Pack, 250 Capsules, A3 + 1 Bottle EQUIA Coat 6mL
10003441	EQUIA, Clinic Pack, 250 Capsules, B2 + 1 Bottle EQUIA Coat 6mL
10000857	EQUIA Fil, Assorted Package, 50 Capsules (10 each of A2, A3, A3.5, B1, B3)
10000858	EQUIA Fil, Single Shade Pack, 50 Capsules, A1
10000859	EQUIA Fil, Single Shade Pack, 50 Capsules, A2
10000860	EQUIA Fil, Single Shade Pack, 50 Capsules, A3
10000861	EQUIA Fil, Single Shade Pack, 50 Capsules, A3.5
10000862	EQUIA Fil, Single Shade Pack, 50 Capsules, B1
10000863	EQUIA Fil, Single Shade Pack, 50 Capsules, B2
10000864	EQUIA Fil, Single Shade Pack, 50 Capsules, B3
10000865	EQUIA Fil, Single Shade Pack, 50 Capsules, C4
10000995	EQUIA Fil, Single Shade Pack, 50 Capsules, SW
10000866	EQUIA Coat, 4mL bottle

EQUIA Forte HT	
10004846	EQUIA Forte HT, Intro Pack, 20 capsules A2 + 20 Unitdoses of EQUIA Forte Coat
10004796	EQUIA Forte HT, Intro Pack, 20 capsules A3 + 20 Unitdoses of EQUIA Forte Coat
10004950	EQUIA Forte HT, Intro Pack, 20 capsules B2 + 20 Unitdoses of EQUIA Forte Coat
10004866	EQUIA Forte HT, Promo Pack, 100 capsules A2 + 1 bottle EQUIA Forte Coat 4mL
10004848	EQUIA Forte HT, Promo Pack, 2x50 capsules A2-A3 + 1 bottle EQUIA Forte Coat 4mL
10004811	EQUIA Forte HT, Promo Pack, 100 capsules A3 + 1 bottle EQUIA Forte Coat 4mL
10004847	EQUIA Forte HT, Promo Pack, 2x50 capsules A3-B2 + 1 bottle EQUIA Forte Coat 4mL
10004863	EQUIA Forte HT, Clinic Pack, 200 capsules A2 + 1 bottle EQUIA Forte Coat 4mL
10004892	EQUIA Forte HT, Clinic Pack, 200 capsules A3 + 1 bottle EQUIA Forte Coat 4mL
10004874	EQUIA Forte HT, Clinic Pack, 200 capsules B2 + 1 bottle EQUIA Forte Coat 4mL
10004873	EQUIA Forte HT, Refill Pack, 50 capsules A1
10004841	EQUIA Forte HT, Refill Pack, 50 capsules A2
10004901	EQUIA Forte HT, Refill Pack, 50 capsules A3
10004872	EQUIA Forte HT, Refill Pack, 50 capsules A3.5
10004878	EQUIA Forte HT, Refill Pack, 50 capsules B1
10004856	EQUIA Forte HT, Refill Pack, 50 capsules B2
10004864	EQUIA Forte HT, Refill Pack, 50 capsules B3
10004794	EQUIA Forte HT, Refill Pack, 50 capsules C4
10004855	EQUIA Forte HT, Refill Assorted Pack (10 capsules each of A2, A3, A3.5, B1, B3)
10004885	EQUIA Forte FlipCap Coat, 4mL bottle
10003513	EQUIA Forte Coat, 50 Unitdoses

D-Light Pro	
70000008	D-Light Pro Kit (Handpiece sleeve & electronic module, light-guide 8mm, battery packs x2, charging station, power supply, EU/UK adapters, hard eye-protection shield, soft eye-protection shields x3)
70000118	D-Light Pro handpiece sleeve
70000010	D-Light Pro battery pack
70000119	D-Light Pro charging station
70000120	D-Light Pro power supply & EU/UK adapters
70000121	D-Light Pro hard eye-protection shield
70000078	D-Light Pro high-strength light-guide 8mm
70000025	D-Light Pro soft eye-protection shields (x10)
G-Premio BOND	
10001457	G-Premio BOND Kit, 5mL Bottle + accessories
10001458	G-Premio BOND 3-Bottle Pack, 5mL x3
10001461	G-Premio BOND Bottle Refill, 5mL
10001242	G-Premio BOND Unit Dose x50 pieces
10001349	G-Premio BOND DCA 5mL liquid

G-aenial Bond	
10001367	G-aenial Bond Kit, 5mL Bottle + accessories
10001369	G-aenial Bond 3-Bottle Pack, 5mL x3
10001371	G-aenial Bond Bottle Refill, 5mL
G-BOND	
10000354	G-BOND Starter Kit, 5mL Bottle + accessories
10000368	G-BOND Starter Kit, Unit Dose x50 pieces
G2-BOND Universal	
10006819	G2-BOND Universal Bottle Kit
10006821	G2-BOND Universal 1-PRIMER, Bottle Refill, 5ml
10006822	G2-BOND Universal 2-BOND ,Bottle Refill, 5ml
10006972	G2-BOND Universal 1-PRIMER Bottle Cover
10006973	G2-BOND Universal 2-BOND Bottle Cover

everStick	
10003404	GC everStick Starter Kit (8cm everStickC&B, 8cm everStickPERIO, 30cm² everStickNET, everStickPOST Ø1.2 x5, GC Modeling Liquid 6mL Bottle, G-aenial Universal Flo 2mL syringe, StickREFIX D, StickSTEPPER, StickCARRIER)
10003420	everStick Intro Kit (8cm everStickC&B; 8cm everStickPERIO; StickREFIX D)
10003421	everStick, COMBI Kit (8cm everStickC&B; 8cm everStickPERIO; 30cm² everStickNET; everStickPOST Ø1.2 x5, StickSTEPPER, StickREFIX D)
10003418	everStickC&B, 2x12cm Refill
10003419	everStickC&B, 1x8cm Refill
10003403	everStickNET, 1x30cm² Refill
10003407	everStickPERIO, 2x12cm Refill
10003417	everStickPERIO, 1x8cm Refill
10003416	everStickORTHO, 2x12cm Refill
10003412	everStick POST Intro (posts Ø0,9 x5, posts Ø1,2 x5, posts Ø1,5 x5, GC Modeling Liquid 6mL Bottle)
10003413	everStick POST, posts Ø0,9 Refill x10
10003414	everStick POST, posts Ø1.2 Refill x10
10003415	everStick POST, posts Ø1.5 Refill x10
10003409	StickREFIX L (3+3 silicone instruments)

NEW METAL STRIPS	
10000096	GC Metal Strips, Assortment (All Grains), 12 x 1
EPILEX	
10000117	GC EPILEX Starter Kit, Stand with Dispenser of each Grain
10000122	GC EPILEX Refill, 10m, Translucent Matrix
10000118	GC EPILEX Refill, 10m, Coarse (blue)
10000120	GC EPILEX Refill, 10m, Medium (green)
10000119	GC EPILEX Refill, 10m, Fine (grey)
10000121	GC EPILEX Refill, 10m, X-Fine (pink)
DIAPOLISHER PASTE	
10000892	GC DIAPOLISHER PASTE
Modeling Liquid	
10001380	GC Modeling Liquid Refill, Bottle 6mL
10003387	GC Composite Modeling Kit (Modeling Liquid 6mL, Gradia Brush Holder x2, Gradia Brush Flat x5, Gradia Brush Round x5, Mixing pads x1)

G-aenial A'CHORD	
10006767	G-aenial A'CHORD Layering Kit, 1 syringe x 2.1mL/ shade (A2, A3, AO2, AE, JE)
10006768	G-aenial A'CHORD Core Kit, 1 syringe x 2.1mL/ shade (A1; A2; A3; A3.5; A4)
10006771	G-aenial A'CHORD Bleach Kit, 1 syringe x 2.1mL/ shade (BW, BOW, JE)
10006772	G-aenial A'CHORD Layering Kit, 15 unitsips x 0.16mL/ shade (A2; A3; AO2; AE; JE)
10006773	G-aenial A'CHORD Core Kit, 15 unitsips x 0.16mL/ shade (A1; A2; A3; A3.5; A4)
10006739	G-aenial A'CHORD, Syringe 1 x 2.1mL (4g), A1
10006740	G-aenial A'CHORD, Syringe 1 x 2.1mL (4g), A2
10006741	G-aenial A'CHORD, Syringe 1 x 2.1mL (4g), A3
10006742	G-aenial A'CHORD, Syringe 1 x 2.1mL (4g), A3.5
10006743	G-aenial A'CHORD, Syringe 1 x 2.1mL (4g), A4
10006744	G-aenial A'CHORD, Syringe 1 x 2.1mL (4g), A5
10006745	G-aenial A'CHORD, Syringe 1 x 2.1mL (4g), A6
10006747	G-aenial A'CHORD, Syringe 1 x 2.1mL (4g), AO1
10006748	G-aenial A'CHORD, Syringe 1 x 2.1mL (4g), AO2
10006749	G-aenial A'CHORD, Syringe 1 x 2.1mL (4g), AO3
10006751	G-aenial A'CHORD, Syringe 1 x 2.1mL (4g), JE (Junior Enamel),
10006752	G-aenial A'CHORD, Syringe 1 x 2.1mL (4g), AE (Adult Enamel)
10006746	G-aenial A'CHORD, Syringe 1 x 2.1mL (4g), BW (Bleach)
10006750	G-aenial A'CHORD, Syringe 1 x 2.1mL (4g), BOW (Opaque Bleach)
10006753	G-aenial A'CHORD, Unitip 15 x 0.16mL (0.3g), A1
10006754	G-aenial A'CHORD, Unitip 15 x 0.16mL (0.3g), A2
10006755	G-aenial A'CHORD, Unitip 15 x 0.16mL (0.3g), A3
10006756	G-aenial A'CHORD, Unitip 15 x 0.16mL (0.3g), A3.5
10006757	G-aenial A'CHORD, Unitip 15 x 0.16mL (0.3g), A4
10006758	G-aenial A'CHORD, Unitip 15 x 0.16mL (0.3g), A5
10006759	G-aenial A'CHORD, Unitip 15 x 0.16mL (0.3g), A6
10006761	G-aenial A'CHORD, Unitip 15 x 0.16mL (0.3g), AO1
10006762	G-aenial A'CHORD, Unitip 15 x 0.16mL (0.3g), AO2
10006763	G-aenial A'CHORD, Unitip 15 x 0.16mL (0.3g), AO3
10006765	G-aenial A'CHORD, Unitip 15 x 0.16mL (0.3g), JE (Junior Enamel)
10006766	G-aenial A'CHORD, Unitip 15 x 0.16mL (0.3g), AE (Adult Enamel)
10006760	G-aenial A'CHORD, Unitip 15 x 0.16mL (0.3g), BW (Bleach)
10006764	G-aenial A'CHORD, Unitip 15 x 0.16mL (0.3g), BOW (Opaque Bleach)
G-aenial Anterior	
10000773	G-aenial, Quick Start Kit Syringe (Syringes 2.7mL of A1, A2, A3, B2, JE, AE, IE + Shade Guide)
10000772	G-aenial, Quick Start Kit Unitip (5 Unitips each of A1, A2, A3, B2, JE, AE, IE + Shade Guide)
10000823	G-aenial Anterior, Syringe 2.7mL (4.7g), XBW
10000803	G-aenial Anterior, Syringe 2.7mL (4.7g), BW
10000804	G-aenial Anterior, Syringe 2.7mL (4.7g), A1
10000805	G-aenial Anterior, Syringe 2.7mL (4.7g), A2
10000806	G-aenial Anterior, Syringe 2.7mL (4.7g), A3
10000807	G-aenial Anterior, Syringe 2.7mL (4.7g), A3.5
10000808	G-aenial Anterior, Syringe 2.7mL (4.7g), A4
10000824	G-aenial Anterior, Syringe 2.7mL (4.7g), B1
10000809	G-aenial Anterior, Syringe 2.7mL (4.7g), B2
10000810	G-aenial Anterior, Syringe 2.7mL (4.7g), B3
10000811	G-aenial Anterior, Syringe 2.7mL (4.7g), C3
10000812	G-aenial Anterior, Syringe 2.7mL (4.7g), CV
10000813	G-aenial Anterior, Syringe 2.7mL (4.7g), CVD
10000814	G-aenial Anterior, Syringe 2.7mL (4.7g), AO2
10000815	G-aenial Anterior, Syringe 2.7mL (4.7g), AO3
10000816	G-aenial Anterior, Syringe 2.7mL (4.7g), AO4
10000817	G-aenial Anterior, Syringe 2.7mL (4.7g), JE
10000818	G-aenial Anterior, Syringe 2.7mL (4.7g), AE
10000819	G-aenial Anterior, Syringe 2.7mL (4.7g), OE
10000820	G-aenial Anterior, Syringe 2.7mL (4.7g), IE
10000821	G-aenial Anterior, Syringe 2.7mL (4.7g), SE
10000822	G-aenial Anterior, Syringe 2.7mL (4.7g), CVE
10000795	G-aenial Anterior, Unitip 10x0.16mL (0.28g), XBW
10000783	G-aenial Anterior, Unitip 10x0.16mL (0.28g), BW
10000775	G-aenial Anterior, Unitip 20x0.16mL (0.28g), A1
10000776	G-aenial Anterior, Unitip 20x0.16mL (0.28g), A2
10000777	G-aenial Anterior, Unitip 20x0.16mL (0.28g), A3
10000778	G-aenial Anterior, Unitip 20x0.16mL (0.28g), A3.5

10000784	G-aenial Anterior, Unitip 10x0.16mL (0.28g), A4
10000776	G-aenial Anterior, Unitip 10x0.16mL (0.28g), B1
10000785	G-aenial Anterior, Unitip 10x0.16mL (0.28g), B2
10000786	G-aenial Anterior, Unitip 10x0.16mL (0.28g), B3
10000787	G-aenial Anterior, Unitip 10x0.16mL (0.28g), C3
10000780	G-aenial Anterior, Unitip 20x0.16mL (0.28g), CV
10000788	G-aenial Anterior, Unitip 10x0.16mL (0.28g), CVD
10000789	G-aenial Anterior, Unitip 10x0.16mL (0.28g), AO2
10000779	G-aenial Anterior, Unitip 20x0.16mL (0.28g), AO3
10000790	G-aenial Anterior, Unitip 10x0.16mL (0.28g), AO4
10000791	G-aenial Anterior, Unitip 10x0.16mL (0.28g), JE
10000781	G-aenial Anterior, Unitip 20x0.16mL (0.28g), AE
10000792	G-aenial Anterior, Unitip 10x0.16mL (0.28g), TE
10000783	G-aenial Anterior, Unitip 20x0.16mL (0.28g), IE
10000793	G-aenial Anterior, Unitip 10x0.16mL (0.28g), SE
10000794	G-aenial Anterior, Unitip 10x0.16mL (0.28g), CVE
10000774	G-aenial Shade Guide

G-aenial Posterior	
10000825	G-aenial Posterior, Syringe 2.7mL (5.5g), P-A1
10000826	G-aenial Posterior, Syringe 2.7mL (5.5g), P-A2
10000827	G-aenial Posterior, Syringe 2.7mL (5.5g), P-A3
10000828	G-aenial Posterior, Syringe 2.7mL (5.5g), P-A3.5
10000829	G-aenial Posterior, Syringe 2.7mL (5.5g), P-JE
10000830	G-aenial Posterior, Syringe 2.7mL (5.5g), P-IE
10000797	G-aenial Posterior, Unitip 20x0.16mL (0.33g), P-A1
10000798	G-aenial Posterior, Unitip 20x0.16mL (0.33g), P-A2
10000799	G-aenial Posterior, Unitip 20x0.16mL (0.33g), P-A3
10000800	G-aenial Posterior, Unitip 20x0.16mL (0.33g), P-A3.5
10000801	G-aenial Posterior, Unitip 20x0.16mL (0.33g), P-JE
10000802	G-aenial Posterior, Unitip 20x0.16mL (0.33g), P-IE

G-aenial Universal Injectable	
10003703	G-aenial Universal Injectable, Syringe 1mL (1.7g), XBW
10003704	G-aenial Universal Injectable, Syringe 1mL (1.7g), BW
10003705	G-aenial Universal Injectable, Syringe 1mL (1.7g), A1
10003706	G-aenial Universal Injectable, Syringe 1mL (1.7g), A2
10003707	G-aenial Universal Injectable, Syringe 1mL (1.7g), A3
10003708	G-aenial Universal Injectable, Syringe 1mL (1.7g), A3.5
10003709	G-aenial Universal Injectable, Syringe 1mL (1.7g), A4
10003710	G-aenial Universal Injectable, Syringe 1mL (1.7g), B1
10003711	G-aenial Universal Injectable, Syringe 1mL (1.7g), B2
10003712	G-aenial Universal Injectable, Syringe 1mL (1.7g), CV
10003713	G-aenial Universal Injectable, Syringe 1mL (1.7g), CVD
10003714	G-aenial Universal Injectable, Syringe 1mL (1.7g), AO1
10003715	G-aenial Universal Injectable, Syringe 1mL (1.7g), AO2
10003716	G-aenial Universal Injectable, Syringe 1mL (1.7g), AO3
10003717	G-aenial Universal Injectable, Syringe 1mL (1.7g), JE
10003718	G-aenial Universal Injectable, Syringe 1mL (1.7g), AE

G-aenial Universal Flo	
10000849	G-aenial Universal Flo, Syringe 2mL (3.4g), BW
10000838	G-aenial Universal Flo, Syringe 2mL (3.4g), A1
10000839	G-aenial Universal Flo, Syringe 2mL (3.4g), A2
10000840	G-aenial Universal Flo, Syringe 2mL (3.4g), A3
10000841	G-aenial Universal Flo, Syringe 2mL (3.4g), A3.5
10000842	G-aenial Universal Flo, Syringe 2mL (3.4g), A4
10000843	G-aenial Universal Flo, Syringe 2mL (3.4g), B1
10000844	G-aenial Universal Flo, Syringe 2mL (3.4g), B2
10000845	G-aenial Universal Flo, Syringe 2mL (3.4g), B3
10000846	G-aenial Universal Flo, Syringe 2mL (3.4g), C3
10000850	G-aenial Universal Flo, Syringe 2mL (3.4g), CV
10000847	G-aenial Universal Flo, Syringe 2mL (3.4g), AO2
10000848	G-aenial Universal Flo, Syringe 2mL (3.4g), AO3
10000851	G-aenial Universal Flo, Syringe 2mL (3.4g), JE
10000852	G-aenial Universal Flo, Syringe 2mL (3.4g), AE

G-aenial Flo X	
10003361	G-aenial Flo X, Syringe 2mL (3.6g), A1
10003362	G-aenial Flo X, Syringe 2mL (3.6g), A2
10003363	G-aenial Flo X, Syringe 2mL (3.6g), A3
10003364	G-aenial Flo X, Syringe 2mL (3.6g), A3.5

10003365	G-aenial Flo X, Syringe 2mL (3.6g), A4
10003366	G-aenial Flo X, Syringe 2mL (3.6g), CV
10003367	G-aenial Flo X, Syringe 2mL (3.6g), AO2
10003368	G-aenial Flo X, Syringe 2mL (3.6g), AO3
Essentia	
10003517	Essentia, Starter Kit Syringe (Syringe 2mL of LD; MD; DD; LE; DE; U; ML +shade guide)
10003543	Essentia, Starter Kit Unitip (5 unitips each of LD; MD; DD; LE; DE; U +Syringe 2mL ML + shade guide)
10003533	Essentia, Modifier Kit (Syringe 2.4mL of RBM, BM, WM, Syringe 2mL OM)
10003519	Essentia, Syringe 2mL (3.4g), LD
10003520	Essentia, Syringe 2mL (3.4g), MD
10003521	Essentia, Syringe 2mL (3.4g), DD
10003522	Essentia, Syringe 2mL (3.8g), LE
10003523	Essentia, Syringe 2mL (3.8g), DE
10003525	Essentia, Syringe 2mL (3.4g), ML
10003544	Essentia, Unitip 15x0.16mL (0.27g), LD
10003545	Essentia, Unitip 15x0.16mL (0.27g), MD
10003546	Essentia, Unitip 15x0.16mL (0.27g), DD
10003547	Essentia, Unitip 15x0.16mL (0.30g), LE
10003548	Essentia, Unitip 15x0.16mL (0.30g), DE
10003549	Essentia, Unitip 15x0.16mL (0.32g), U
10003535	Essentia, Syringe 2.4mL (2.5g), RBM
10003536	Essentia, Syringe 2.4mL (2.5g), BM
10003537	Essentia, Syringe 2.4mL (2.5g), WM
10003538	Essentia, Syringe 2mL (3.8g), OM
Essentia Universal	
10003524	Essentia, Syringe 2mL (4.0g), U
10003383	Essentia HiFlo, Syringe 2mL (3.6g), U
10003385	Essentia LoFlo, Syringe 2mL (3.4g), U
GRADIA DIRECT Anterior	
10000326	GRADIA DIRECT, Introductory Kit (Syringe 2.7mL of A2, A3, A3.5, AO3, CV, CT, P-A2 + Shade Guide)
10000285	GRADIA DIRECT, Introductory Kit (5 Unitips of each A2, A3, A3.5, AO3, CV, CT, P-A2 + Shade Guide)
10000352	GRADIA DIRECT, Anterior, Syringe 2.7mL (4g), XBW
10000337	GRADIA DIRECT, Anterior, Syringe 2.7mL (4g), BW
10000305	GRADIA DIRECT, Anterior, Syringe 2.7mL (4g), A1
10000306	GRADIA DIRECT, Anterior, Syringe 2.7mL (4g), A2
10000307	GRADIA DIRECT, Anterior, Syringe 2.7mL (4g), A3
10000308	GRADIA DIRECT, Anterior, Syringe 2.7mL (4g), A3.5
10000329	GRADIA DIRECT, Anterior, Syringe 2.7mL (4g), A4
10000351	GRADIA DIRECT, Anterior, Syringe 2.7mL (4g), B1
10000330	GRADIA DIRECT, Anterior, Syringe 2.7mL (4g), B2
10000331	GRADIA DIRECT, Anterior, Syringe 2.7mL (4g), B3
10000332	GRADIA DIRECT, Anterior, Syringe 2.7mL (4g), C3
10000310	GRADIA DIRECT, Anterior, Syringe 2.7mL (4g), CV
10000335	GRADIA DIRECT, Anterior, Syringe 2.7mL (4g), CVD
10000333	GRADIA DIRECT, Anterior, Syringe 2.7mL (4g), AO2
10000309	GRADIA DIRECT, Anterior, Syringe 2.7mL (4g), AO3
10000334	GRADIA DIRECT, Anterior, Syringe 2.7mL (4g), AO4
10000340	GRADIA DIRECT, Anterior, Syringe 2.7mL (4g), DT
10000336	GRADIA DIRECT, Anterior, Syringe 2.7mL (4g), CT
10000339	GRADIA DIRECT, Anterior, Syringe 2.7mL (4g), GT
10000311	GRADIA DIRECT, Anterior, Syringe 2.7mL (4g), NT
10000338	GRADIA DIRECT, Anterior, Syringe 2.7mL (4g), WT
10000341	GRADIA DIRECT, Anterior, Syringe 2.7mL (4g), CVT
10000350	GRADIA DIRECT, Anterior, Unitip 10x0.16mL (0.24g), XBW
10000300	GRADIA DIRECT, Anterior, Unitip 10x0.16mL (0.24g), BW
10000286	GRADIA DIRECT, Anterior, Unitip 20x0.16mL (0.24g), A1
10000287	GRADIA DIRECT, Anterior, Unitip 20x0.16mL (0.24g), A2
10000288	GRADIA DIRECT, Anterior, Unitip 20x0.16mL (0.24g), A3
10000289	GRADIA DIRECT, Anterior, Unitip 20x0.16mL (0.24g), A3.5
10000293	GRADIA DIRECT, Anterior, Unitip 10x0.16mL (0.24g), A4
10000349	GRADIA DIRECT, Anterior, Unitip 10x0.16mL (0.24g), B1
10000294	GRADIA DIRECT, Anterior, Unitip 10x0.16mL (0.24g), B2
10000295	GRADIA DIRECT, Anterior, Unitip 10x0.16mL (0.24g), B3
10000296	GRADIA DIRECT, Anterior, Unitip 10x0.16mL (0.24g), C3
10000291	GRADIA DIRECT, Anterior, Unitip 20x0.16mL (0.24g), CV

10000299	GRADIA DIRECT, Anterior, Unitip 10x0.16mL (0.24g), CVD
10000297	GRADIA DIRECT, Anterior, Unitip 10x0.16mL (0.24g), AO2
10000290	GRADIA DIRECT, Anterior, Unitip 20x0.16mL (0.24g), AO3
10000298	GRADIA DIRECT, Anterior, Unitip 10x0.16mL (0.24g), AO4
10000327	GRADIA DIRECT, Anterior, Unitip 20x0.16mL (0.24g), DT
10000301	GRADIA DIRECT, Anterior, Unitip 10x0.16mL (0.24g), CT
10000303	GRADIA DIRECT, Anterior, Unitip 10x0.16mL (0.24g), GT
10000292	GRADIA DIRECT, Anterior, Unitip 20x0.16mL (0.24g), NT
10000302	GRADIA DIRECT, Anterior, Unitip 10x0.16mL (0.24g), WT
10000304	GRADIA DIRECT, Anterior, Unitip 10x0.16mL (0.24g), CVT

GRADIA DIRECT Posterior	
10000317	GRADIA DIRECT, Posterior, Syringe 2.7mL (4.7g), P-A1
10000318	GRADIA DIRECT, Posterior, Syringe 2.7mL (4.7g), P-A2
10000319	GRADIA DIRECT, Posterior, Syringe 2.7mL (4.7g), P-A3
10000320	GRADIA DIRECT, Posterior, Syringe 2.7mL (4.7g), P-A3.5
10000342	GRADIA DIRECT, Posterior, Syringe 2.7mL (4.7g), P-WT
10000321	GRADIA DIRECT, Posterior, Syringe 2.7mL (4.7g), P-NT
10000312	GRADIA DIRECT, Posterior, Unitip 20x0.16mL (0.28g), P-A1
10000313	GRADIA DIRECT, Posterior, Unitip 20x0.16mL (0.28g), P-A2
10000314	GRADIA DIRECT, Posterior, Unitip 20x0.16mL (0.28g), P-A3
10000315	GRADIA DIRECT, Posterior, Unitip 20x0.16mL (0.28g), P-A3.5
10000328	GRADIA DIRECT, Posterior, Unitip 20x0.16mL (0.28g), P-WT



GC EUROPE N.V.

Head Office
Researchpark,
Haasrode-Leuven 1240
Interleuvenlaan 33, B-3001 Leuven
Tel. +32 16 74 10 00
Fax.+32 16 40 48 32
info.gce@gc.dental
<https://www.gc.dental/europe>

GC UNITED KINGDOM Ltd.

Coopers Court Newport Pagnell
Buckinghamshire MK16 8JS
United Kingdom
Tel. +44 1908 218 999
Fax.+44 1908 218 900
info.uk@gc.dental
<https://www.gc.dental/europe/en-GB>

