

Instruments/Pliers



Global Experts in Orthodontics

03

GC Orthodontics
GLOBAL EXPERTS IN ORTHODONTICS

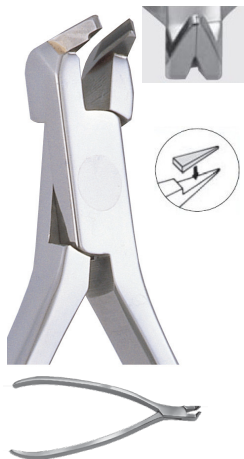
Instruments/Pliers

Cutters	143
Utility Pliers	143
Wire Forming Pliers	144
Plier Replacement Parts	145
Aligner Pliers	146
Mathieus and Hemostats	147
Bracket and Band Placing Instruments, Miscellaneous	148
Miscellaneous	149

Instruments



Cutters



Distal End Safety Cutter - Slim
Part # GCOA-001

Length: 120mm
Maximum Cutting Capacity: Rectangular wires up to .022" x.028"
Round Wires up to .020"
Braided wires up to .016"

Long Handle Option
Part # GCOA-011
Length: 147mm



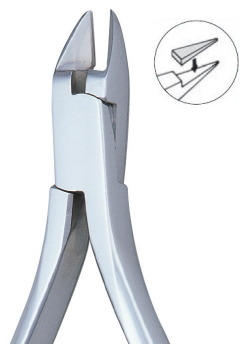
Distal End Safety Cutter - Flush Cut
Part # GCOA-102A

Length: 121mm
Maximum Cutting Capacity: Rectangular wires up to .022" x.028"
Round Wires up to .020"
Braided wires up to .021x.025"
Safety hold bar



Distal End Safety Cutter - Slim, Flush Cut
Part # GCOA-102

Length: 121mm
Maximum Cutting Capacity: Rectangular wires up to .022" x.028"
Round Wires up to .020"
Braided wires up to .021" x .025"
Holds both stainless steel and niti wires. Heat proof rubber tip



Pin and Ligature Cutter - Slim
Part # GCOA-301

Length: 126mm
Maximum Cutting Capacity: Ligature wires up to .015"



Pin and Ligature Cutter - Miniature
Part # GCOA-004

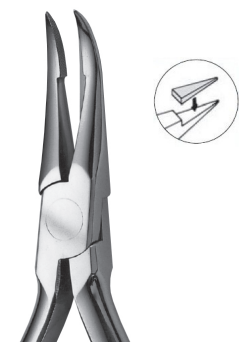
Length: 120mm
Maximum Cutting Capacity: Soft wires up to .015"



Hard Wire Cutter
Part # GCOA-006

Length: 126mm
Maximum Cutting Capacity: Hard wires up to .020" round

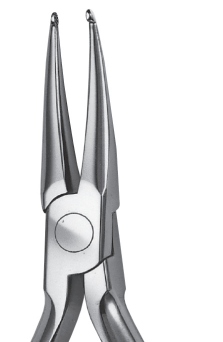
Utility Pliers



Weingart Utility Plier - Slim
Part # GCOA-118
Length: 136mm



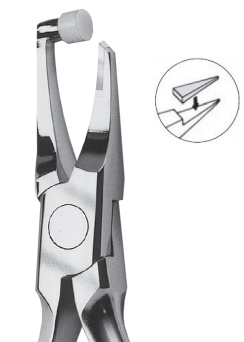
Weingart Utility Plier - Standard
Part # GCOA-117
Length: 127mm



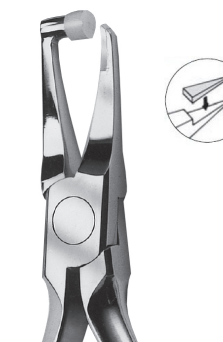
How Plier
Part # GCOA-007
Length: 138mm
Tips: 3.2mm (1/8") diameter



Bond and Adhesive Removing Plier
Part # GCOA-183
Length: 137mm



Posterior Band Removing Plier
Part # GCOA-025
Length: 131mm



Posterior Band Removing Plier - Long
Part # GCOA-172
Length: 131mm

Instruments



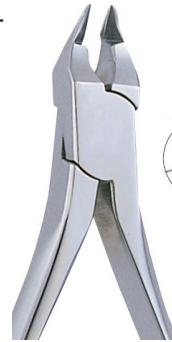
Utility Pliers



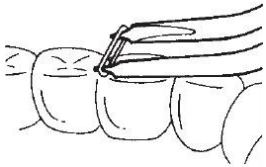
Direct Bond Removing Plier - Straight
Part # GCOA-020
 Length: 127mm



Direct Bond Removing Plier - Angled
Part # GCOA-304
 Length: 123mm



Bracket Removing Plier
Part # GCOA-305
 Length: 122mm



Elastic Separating Plier
Part # GCOA-182
 Length: 163mm

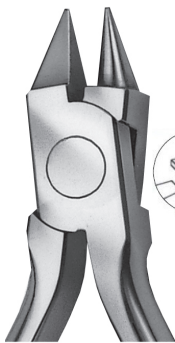


Band Contouring Plier
Part # GCOA-164
 Length: 124mm

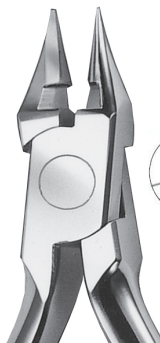


Hook Crimping Plier
Part # GCOA-220
 Length: 119mm

Wire Forming Pliers



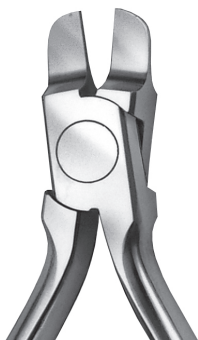
Bird Beak Plier
Part # GCOA-009
 Length: 117mm
 Maximum Bending Capacity: Wires up to .030"



Light Wire Plier with Cutter
Part # GCOA-122
 Length: 120mm
 Maximum Bending Capacity: Wires up to .020"
 Grooved Square Tip



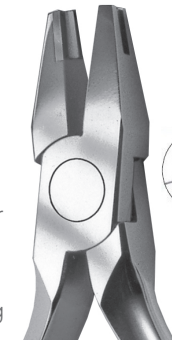
Niti Cinch Back Plier
Part # GCOA-186
 Length: 135mm
 Maximum Bending Capacity: Niti wires up to .025"



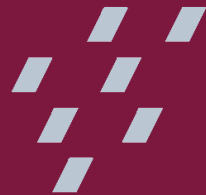
Tweed Arch Bending Plier - .043
Part # GCOA-140
 Length: 117mm
 Maximum Bending Capacity: Rectangular wires up to .022"x.028"
 Beaks are .043" wide, parallel at .020" opening



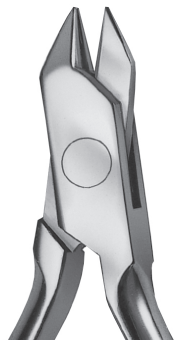
Tweed Arch Bending Plier - .060
Part # GCOA-012
 Length: 117mm
 Maximum Bending Capacity: Rectangular wires up to .022"x.028"
 Beaks are .060" wide, parallel at .020" opening



Stop (V-Bend) Plier
Part # GCOA-142
 Length: 117mm
 Maximum Bending Capacity: Rectangular wires up to .025"



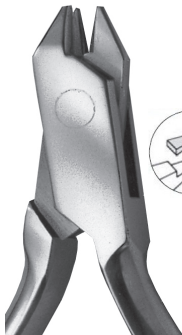
Wire Forming Pliers



Three Jaw Plier

Part # GCOA-139

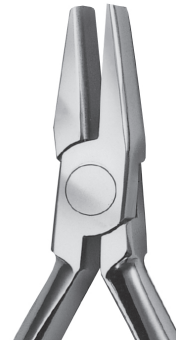
Length: 125mm
Maximum Bending Capacity: Rectangular wires up to .022" x .028"



Heavy Three Jaw Plier

Part # GCOA-013

Length: 122mm
Maximum Bending Capacity: Wires up to .036"



Hollow Chop Plier

Part # GCOA-014

Length: 125mm
Maximum Bending Capacity: Wires up to .022"



Loop Forming Plier

Part # GCOA-131

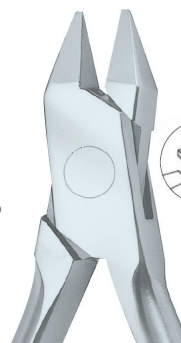
Length: 125mm
Maximum Bending Capacity: Wires up to .022"



Nance Loop Forming Plier

Part # GCOA-136

Length: 117mm
Maximum Bending Capacity: Wires up to .022"
Beaks are parallel at .020" opening



Adams Plier

Part # GCOA-302

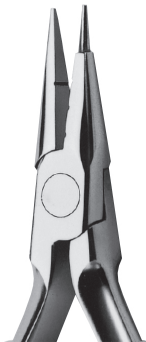
Length: 132mm
Maximum Bending Capacity: Wires up to .040"



Step Plier

Part # GCOA-228

Length: 118mm
Maximum Bending Capacity: Wires up to .022x.028"



Jarabek Plier

Part # GCOA-128

Length: 127mm
Maximum Bending Capacity: Wires up to .020"

Plier Replacement Parts



Replacement Hold Ring (10/pkg)

Part # GCOA-002

Use with GCOA-102 (Distal End Cutter)



Replacement Pad/Tip (3/pkg)

Part # GCOA-003

Use with GCOA-183 (Bond Removing Pliers)



Replacement Metal Tip (1/pkg)

Part # GCOA-005

Double Ended
Use with GCOA-183 (Bond Removing Pliers)



Hex Wrench (1/pkg)

Part # GCOA-008

Use with GCOA-183 (Bond Removing Pliers) and GCOA-60105 (Convertible Cap Remover)

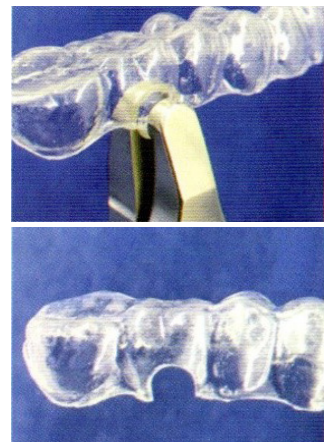
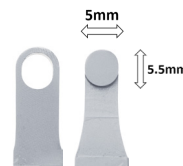
Instruments

Aligner Pliers

NEW!



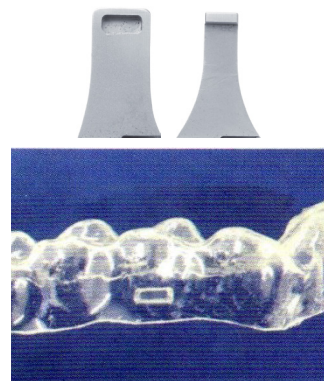
Hole Punch Plier
Part # GCOA-731
 Length: 125mm



The Hole Punch Plier creates half-moon cutouts to facilitate the use of bondable buttons for elastics with aligners. It eliminates the need to attach buttons to plastic trays. It is also helpful for trimming aligners to reduce impingement and for patient comfort.



Horizontal Indent Plier
Part # GCOA-732
 Length: 118mm



The Horizontal Indent Plier is used to create an indentation to accent individual root torque. It can also be used to place an indent into a specific tooth's undercut or below a bonded attachment to enhance retention of clear aligners and retainers.



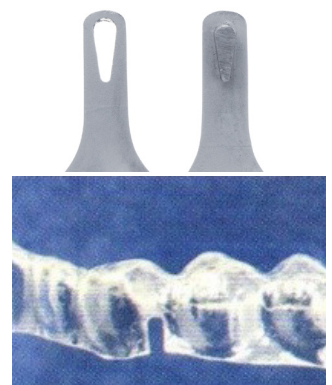
Vertical Indent Plier
Part # GCOA-733
 Length: 118mm



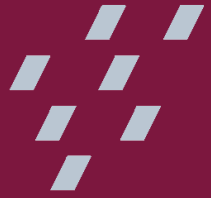
The Vertical Indent Plier is used to create an indentation at the mesial or distal line angles on the lingual and/or buccal of a specific tooth to emphasize over-correction of rotations. Vertical indents on the lingual and buccal surfaces on opposing sides of a tooth can be created. In/out discrepancies can also be addressed with this plier.



Teardrop Hole Plier
Part # GCOA-734
 Length: 118mm



The Teardrop Hole Plier is used to create a notch at the gingival margin of clear aligners where elastic hooks are needed. It provides a reservoir to hold elastics in place as the aligner is seated, which helps the patient with placement of elastics.



Mathieus and Hemostats



E. A. Beck Mathieu for Elastomerics
Part # BECK500-081

A positive locking plier with extra fine serrated beaks for holding and placing elastic materials without tearing them. Not for use with ligature wire.



E. A. Beck Mathieu for Wire
Part # BECK500-083

A positive locking plier with extra fine serrated beaks for grasping and twisting ligature wires. Tips are fine enough to be used for placing elastic materials as well.



E.A. Beck Smaha Forceps - Straight
Part # BECK640-017

Mathieu with extra thin straight tips, excellent for twisting ligatures.



Mathieu Hemostat
Part # GCOA-024

Length: 155mm



Smaha Forceps - Straight
Part # GCOA-010

Length: 140mm



Mosquito Forceps
Part # GCOA-158

Length: 122mm

Instruments

Bracket and Band Placing Instruments/Miscellaneous



Cross Action Bracket Bonding Tweezer
Part # BECK600-309



Posterior Bonding Tweezer - Reverse Action
Part # BECK600-024



LP Tube Tweezer
Part # GCOA-501



Cotton/College Plier
Part # BECK100-954



Bond Placer
Part # GCOA-050
Spring-Loaded



#5 Mouth Mirror with Octagon Handle
Part # BECK520-406



Bracket Height Gauge
Part # 50-6050-0022



High Heat Bite Stick, White
Part # 50-8020-0000

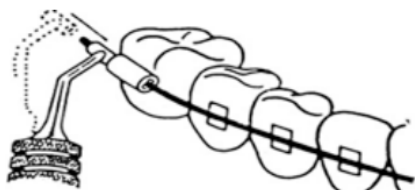


Band Pusher
Part # GCOA-303
Length: 133mm



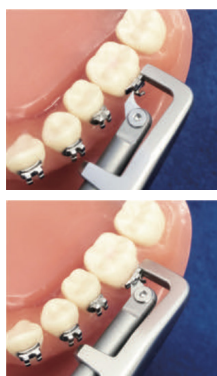
Distal Bender - Double Ended
Part # BECK650-360

*Double ended - .022" and .030"
Works with SS, TMA and NiTi™ wires
For cinchbacks, Bends distal ends of archwires,
and tails of springs*





Miscellaneous



NEW!

Convertible Cap Removing Plier

Part # GCOA-60105

Length: 123mm



Ligature and Band Scissor - Light

Part # BECK500-203 (Straight)

Part # BECK500-207 (Curved)

Narrow tips for finer control of cutting bands, straight band material and fine wires. Also perfect for trimming invisible retainer material.



Ligature and Band Scissor - Heavy

Part # BECK500-211 (Straight)

Part # BECK500-215 (Curved)

Wider tips for cutting bands, straight band material and fine wires. Also works well for trimming invisible retainer material.



Single End Explorer

Part # GCOA-023



Ligature Director - Single End

Part # GCOA-8196



Ligature Director - Double End

Part # GCOA-60823



Scaler - Double End

Part # GCOA-533



Scaler - Single End

Part # GCOA-05011

Instruments

Miscellaneous



Experience C Opening Tool
Part # 50-1030-0000



Experience Opening Tool
Part # 50-0030-0000



Experience Lingual Opening Tool
Part # 50-0678-7070